

## Recombinant Human IL-17A&IL-17F Heterodimer Protein (His Tag)

Catalog No. PKSH032619

**Note:** Centrifuge before opening to ensure complete recovery of vial contents.

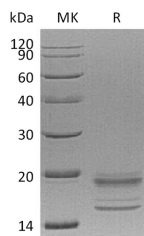
### Description

<b>Synonyms</b>	IL-17A/F Heterodimer;IL-17A&IL-17F Heterodimer
<b>Species</b>	Human
<b>Expression Host</b>	HEK293 Cells
<b>Sequence</b>	Gly24-Ala155&Arg31-Gln163
<b>Accession</b>	Q16552&AAH70124.1
<b>Calculated Molecular Weight</b>	15.1&16 kDa
<b>Observed molecular weight</b>	15-25 kDa
<b>Tag</b>	C-His
<b>Bioactivity</b>	Loaded Biotinylated Human IL-17RA-His-Avi on SA Biosensor, can bind Human IL-17A&17F-His with an affinity constant of 8.6 pM as determined in BLI assay.

### Properties

<b>Purity</b>	> 95 % as determined by reducing SDS-PAGE.
<b>Endotoxin</b>	< 1.0 EU per µg of the protein as determined by the LAL method.
<b>Storage</b>	Generally, lyophilized proteins are stable for up to 12 months when stored at -20 to -80°C. Reconstituted protein solution can be stored at 4-8°C for 2-7 days. Aliquots of reconstituted samples are stable at < -20°C for 3 months.
<b>Shipping</b>	This product is provided as lyophilized powder which is shipped with ice packs.
<b>Formulation</b>	Lyophilized from a 0.2 µm filtered solution of 20mM PB, 150mM NaCl, 1mM EDTA, pH 7.4. Normally 5% - 8% trehalose, mannitol and 0.01% Tween 80 are added as protectants before lyophilization. Please refer to the specific buffer information in the printed manual.
<b>Reconstitution</b>	Please refer to the printed manual for detailed information.

### Data



> 95 % as determined by reducing SDS-PAGE.

### Background

#### For Research Use Only

The IL-17 family include IL-17A, IL-17B, IL-17C, IL-17D, IL-17E (also called IL-25), and IL-17F. The family is comprised of at least six proinflammatory cytokines that share a conserved cysteine-knot structure but diverge at the N-terminus. All members of the IL-17 family have a similar protein structure, with four highly conserved cysteine residues critical to their 3-dimensional shape, yet they have no sequence similarity to any other known cytokines. IL-17 family members are glycoproteins secreted as dimers that induce local cytokine production and recruit granulocytes to sites of inflammation. IL-17 is induced by IL-15 and IL-23, mainly in activated CD4+ T cells distinct from Th1 or Th2 cells. IL-17F is the most homologous to IL-17, but is induced only by IL-23 in activated monocytes.