

Recombinant Human Interleukin-17F/IL-17F Protein

Catalog Number:PKSH032622



Note: Centrifuge before opening to ensure complete recovery of vial contents.

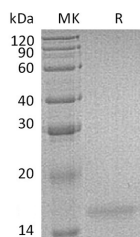
Description

| | |
|------------------------------------|---|
| Synonyms | Interleukin-17F;IL-17F;Cytokine ML-1;Interleukin-24;IL-24;IL17F;IL24 |
| Species | Human |
| Expression Host | E.coli |
| Sequence | Arg31-Gln163 |
| Accession | Q96PD4 |
| Calculated Molecular Weight | 15.8 kDa |
| Observed molecular weight | 18 kDa |
| Tag | C-His |
| Bioactivity | Measure by its ability to induce IL-6 secretion in 3T3 cells. The ED ₅₀ for this effect is < 20 ng/mL. |

Properties

| | |
|-----------------------|---|
| Purity | > 98 % as determined by reducing SDS-PAGE. |
| Endotoxin | < 0.1 EU per µg of the protein as determined by the LAL method. |
| Storage | Generally, lyophilized proteins are stable for up to 12 months when stored at -20 to -80°C. Reconstituted protein solution can be stored at 4-8°C for 2-7 days. Aliquots of reconstituted samples are stable at < -20°C for 3 months. |
| Shipping | This product is provided as lyophilized powder which is shipped with ice packs. |
| Formulation | Lyophilized from sterile 20 mM sodium acetate, pH 4.0. Normally 5 % - 8 % trehalose, mannitol and 0.01 % Tween80 are added as protectants before lyophilization. Please refer to the specific buffer information in the printed manual. |
| Reconstitution | Please refer to the printed manual for detailed information. |

Data



> 98 % as determined by reducing SDS-PAGE.

Background

Interleukin-17 is a potent pro-inflammatory cytokine produced by activated memory T cells. There are at least six members of the IL-17 family in humans and in mice. Today, IL-17 represents a family of structurally related cytokines that share a highly conserved C-terminal region but differ from one another in their N-terminal regions and in their distinct biological roles. The six known members of this family; IL-17A through IL-17F; are secreted as homodimers. IL-17F also regulates cartilage matrix turnover and inhibits angiogenesis.

For Research Use Only

A Reliable Research Partner in Life Science and Medicine

Toll-free: 1-888-852-8623

Web: www.elabscience.com

Tel: 1-832-243-6086

Email: techsupport@elabscience.com

Fax: 1-832-243-6017