

Recombinant Human IL-8/CXCL8 Protein

Catalog Number:PKSH032656



Note: Centrifuge before opening to ensure complete recovery of vial contents.

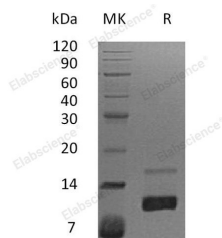
Description

Synonyms	Interleukin-8;IL-8;C-X-C Motif Chemokine 8;Emoxtakin;Granulocyte Chemotactic Protein 1;GCP-1;Monocyte-Derived Neutrophil Chemotactic Factor;MDNCF;Monocyte-Derived Neutrophil-Activating Peptide;MONAP;Neutrophil-Activating Protein 1;NAP-1;Protein 3-10C;T-Cell Chemotactic Factor;GCP1;IL8;Interleukin-8;LECT;LUCT;LYNAP;MDNCF;MONAP;NAF;NAP-1;NAP1
Species	Human
Expression Host	E.coli
Sequence	Ser28-Ser99
Accession	P10145
Calculated Molecular Weight	9.3 kDa
Observed molecular weight	11 kDa
Tag	C-His
Bioactivity	Measure by its ability to chemoattract PBMC. The ED ₅₀ for this effect is < 2 ng/mL.

Properties

Purity	> 98 % as determined by reducing SDS-PAGE.
Endotoxin	< 0.1 EU per µg of the protein as determined by the LAL method.
Storage	Generally, lyophilized proteins are stable for up to 12 months when stored at -20 to -80°C. Reconstituted protein solution can be stored at 4-8°C for 2-7 days. Aliquots of reconstituted samples are stable at < -20°C for 3 months.
Shipping	This product is provided as lyophilized powder which is shipped with ice packs.
Formulation	Lyophilized from sterile PBS,pH 8.0. Normally 5 % - 8 % trehalose, mannitol and 0.01% Tween80 are added as protectants before lyophilization. Please refer to the specific buffer information in the printed manual.
Reconstitution	Please refer to the printed manual for detailed information.

Data



> 98 % as determined by reducing SDS-PAGE.

Background

Interleukin-8 (IL-8) belongs to the neutrophil-specific CXC family of chemokines. It is one of the initial cytokines

For Research Use Only

A Reliable Research Partner in Life Science and Medicine

Toll-free: 1-888-852-8623

Web: www.elabscience.com

Tel: 1-832-243-6086

Email: techsupport@elabscience.com

Fax: 1-832-243-6017

Recombinant Human IL-8/CXCL8 Protein

Catalog Number:PKSH032656



released from a variety of cell types; including T cells; endothelial cells and fibroblasts; in response to an inflammatory stimulus and acts by recruiting neutrophils; T-cells and basophils to the site of inflammation. Elevated Interleukin-8 levels are associated with the onset of a variety of disease states.

For Research Use Only

A Reliable Research Partner in Life Science and Medicine

Toll-free: 1-888-852-8623

Web: www.elabscience.com

Tel: 1-832-243-6086

Email: techsupport@elabscience.com

Fax: 1-832-243-6017