

Recombinant Human Kallikrein 1/KLK1 Protein (His Tag)

Catalog No. PKSH032664

Note: Centrifuge before opening to ensure complete recovery of vial contents.

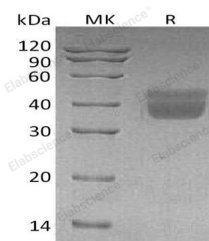
Description

Synonyms	Kallikrein-1;Kidney/Pancreas/Salivary Gland Kallikrein;Tissue Kallikrein;KLK1
Species	Human
Expression Host	HEK293 Cells
Sequence	Pro19-Ser262
Accession	AAH05313.1
Calculated Molecular Weight	28.2 kDa
Observed molecular weight	38-55 kDa
Tag	C-His
Bioactivity	Not validated for activity

Properties

Purity	> 95 % as determined by reducing SDS-PAGE.
Endotoxin	< 1.0 EU per µg of the protein as determined by the LAL method.
Storage	Store at < -20°C, stable for 6 months. Please minimize freeze-thaw cycles.
Shipping	This product is provided as liquid. It is shipped at frozen temperature with blue ice/gel packs. Upon receipt, store it immediately at < -20°C.
Formulation	Supplied as a 0.2 µm filtered solution of 20mM Tris-HCl, 150mM NaCl, 2mM CaCl ₂ , pH 8.0.
Reconstitution	Not Applicable

Data



> 95 % as determined by reducing SDS-PAGE.

Background

Kallikrein-1 (KLK1) is a member of human tissue Kallikrein family. Human KLK1 precursor contains a signal peptide (residues 1 to 18), a short pro peptide (residues 19 to 24) and a mature chain (residues 25 to 262). The function of KLK1 is to cleave Kininogen in order to release the vasoactive Kinin peptide (Lysyl-Bradykinin or Bradykinin). The Kinin peptide controls blood pressure reduction, vasodilation, smooth muscle relaxation and contraction, pain induction and inflammation. KLK1 also plays a role in angiogenesis and tumorigenesis.

For Research Use Only