

Recombinant Human Kallikrein 1/KLK1 Protein (His Tag)



Catalog Number:PKSH032664

Note: Centrifuge before opening to ensure complete recovery of vial contents.

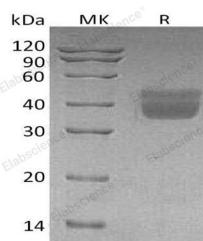
Description

| | |
|------------------------------------|---|
| Synonyms | Kallikrein-1;Kidney/Pancreas/Salivary Gland Kallikrein;Tissue Kallikrein;KLK1 |
| Species | Human |
| Expression Host | HEK293 Cells |
| Sequence | Pro19-Ser262 |
| Accession | AAH05313.1 |
| Calculated Molecular Weight | 28.2 kDa |
| Observed molecular weight | 38-55 kDa |
| Tag | C-His |

Properties

| | |
|-----------------------|--|
| Purity | > 95 % as determined by reducing SDS-PAGE. |
| Endotoxin | < 1.0 EU per µg of the protein as determined by the LAL method. |
| Storage | Store at < -20°C, stable for 6 months. Please minimize freeze-thaw cycles. |
| Shipping | This product is provided as liquid. It is shipped at frozen temperature with blue ice/gel packs. Upon receipt, store it immediately at < - 20°C. |
| Formulation | Supplied as a 0.2 µm filtered solution of 20mM Tris-HCl, 150mM NaCl, 2mM CaCl ₂ , pH 8.0. |
| Reconstitution | Not Applicable |

Data



> 95 % as determined by reducing SDS-PAGE.

Background

Kallikrein-1 (KLK1) is a member of human tissue Kallikrein family. Human KLK1 precursor contains a signal peptide (residues 1 to 18), a short pro peptide (residues 19 to 24) and a mature chain (residues 25 to 262). The function of KLK1 is to cleave Kininogen in order to release the vasoactive Kinin peptide (Lysyl-Bradykinin or Bradykinin). The Kinin peptide controls blood pressure reduction, vasodilation, smooth muscle relaxation and contraction, pain induction and inflammation. KLK1 also plays a role in angiogenesis and tumorigenesis.

For Research Use Only

A Reliable Research Partner in Life Science and Medicine

Toll-free: 1-888-852-8623

Web: www.elabscience.com

Tel: 1-832-243-6086

Email: techsupport@elabscience.com

Fax: 1-832-243-6017