

Recombinant Human Kallikrein 10/KLK10 Protein (His Tag)



Catalog Number:PKSH032665

Note: Centrifuge before opening to ensure complete recovery of vial contents.

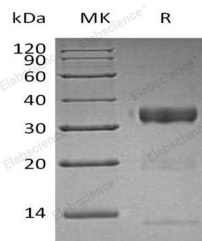
Description

Synonyms	Kallikrein-10;Normal Epithelial Cell-Specific 1;Protease Serine-Like 1;KLK10;NES1;PRSSL1
Species	Human
Expression Host	HEK293 Cells
Sequence	Ala31-Asn276
Accession	AAH02710.1
Calculated Molecular Weight	28.0 kDa
Observed molecular weight	34 kDa
Tag	C-His

Properties

Purity	> 95 % as determined by reducing SDS-PAGE.
Endotoxin	< 1.0 EU per µg of the protein as determined by the LAL method.
Storage	Store at < -20°C, stable for 6 months. Please minimize freeze-thaw cycles.
Shipping	This product is provided as liquid. It is shipped at frozen temperature with blue ice/gel packs. Upon receipt, store it immediately at < - 20°C.
Formulation	Supplied as a 0.2 µm filtered solution of 20mM Tris-HCl, 150mM NaCl, pH 8.0.
Reconstitution	Not Applicable

Data



> 95 % as determined by reducing SDS-PAGE.

Background

Kallikreins are a subgroup of Serine Proteases having diverse physiological functions. Growing evidence suggests that many Kallikreins are implicated in carcinogenesis and some have potential as novel cancer and other disease biomarkers. This gene is one of the fifteen Kallikrein subfamily members located in a cluster on chromosome 19. Its encoded protein is secreted and may play a role in suppression of tumorigenesis in breast and prostate cancers. Alternate splicing of this gene results in multiple transcript variants encoding the same protein.

For Research Use Only

A Reliable Research Partner in Life Science and Medicine

Toll-free: 1-888-852-8623

Web: www.elabscience.com

Tel: 1-832-243-6086

Email: techsupport@elabscience.com

Fax: 1-832-243-6017