

Recombinant Human KLRB1/CD161 Protein (Fc Tag)

Catalog Number:PKSH032676



Note: Centrifuge before opening to ensure complete recovery of vial contents.

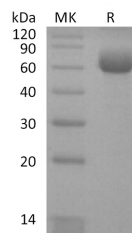
Description

| | |
|------------------------------------|--|
| Synonyms | Killer cell lectin-like receptor subfamily B member 1;KLRB1;CLEC5B;NKR-P1A;CD161;Natural killer cell surface protein P1A;NKR-P1A;HNKR-P1a;C-type lectin domain family 5 member B;KLRB1 |
| Species | Human |
| Expression Host | HEK293 Cells |
| Sequence | Gln67-Ser225 |
| Accession | Q12918 |
| Calculated Molecular Weight | 45.6 kDa |
| Observed molecular weight | 55-70 kDa |
| Tag | C-Fc |

Properties

| | |
|-----------------------|---|
| Purity | > 95 % as determined by reducing SDS-PAGE. |
| Endotoxin | < 1.0 EU per µg of the protein as determined by the LAL method. |
| Storage | Generally, lyophilized proteins are stable for up to 12 months when stored at -20 to -80°C. Reconstituted protein solution can be stored at 4-8°C for 2-7 days. Aliquots of reconstituted samples are stable at < -20°C for 3 months. |
| Shipping | This product is provided as lyophilized powder which is shipped with ice packs. |
| Formulation | Lyophilized from a 0.2 µm filtered solution of PBS, pH 7.4. Normally 5 % - 8 % trehalose, mannitol and 0.01% Tween80 are added as protectants before lyophilization. Please refer to the specific buffer information in the printed manual. |
| Reconstitution | Please refer to the printed manual for detailed information. |

Data



> 95 % as determined by reducing SDS-PAGE.

Background

Killer cell lectin-like receptor subfamily B, member 1 (KLRB1) is a single-pass type II membrane protein which contains 1 C-type lectin domain. KLRB1 plays an inhibitory role on natural killer (NK) cells cytotoxicity. Activation results in specific acid sphingomyelinase/SMPD1 stimulation with subsequent marked elevation of intracellular ceramide. Activation also leads to AKT1/PKB and RPS6KA1/RSK1 kinases stimulation as well as markedly enhanced T-cell proliferation induced by anti-CD3. It acts as a lectin that binds to the terminal carbohydrate Gal-alpha(1,3)Gal epitope as well as to the N-acetylglucosamine epitope. Binds also to CLEC2D/LLT1 as a ligand and inhibits NK cell-mediated

For Research Use Only

A Reliable Research Partner in Life Science and Medicine

Toll-free: 1-888-852-8623

Web: www.elabscience.com

Tel: 1-832-243-6086

Email: techsupport@elabscience.com

Fax: 1-832-243-6017

Recombinant Human KLRB1/CD161 Protein (Fc Tag)

Catalog Number:PKSH032676



cytotoxicity as well as interferon-gamma secretion in target cells.

For Research Use Only

A Reliable Research Partner in Life Science and Medicine

Toll-free: 1-888-852-8623

Tel: 1-832-243-6086

Fax: 1-832-243-6017

Web: www.elabscience.com

Email: techsupport@elabscience.com