

## Recombinant Human LAMP1/CD107a Protein (Fc Tag)

**Catalog No.** PKSH032683

**Note:** Centrifuge before opening to ensure complete recovery of vial contents.

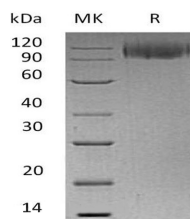
### Description

<b>Synonyms</b>	Lysosome-Associated Membrane Glycoprotein 1;LAMP-1;Lysosome-Associated Membrane Protein 1;CD107 Antigen-Like Family Member A;CD107a;LAMP1;CD107a;LAMPa;LGP120
<b>Species</b>	Human
<b>Expression Host</b>	HEK293 Cells
<b>Sequence</b>	Ala29-Met382
<b>Accession</b>	P11279
<b>Calculated Molecular Weight</b>	65.5 kDa
<b>Observed molecular weight</b>	90-130 kDa
<b>Tag</b>	C-Fc
<b>Bioactivity</b>	Not validated for activity

### Properties

<b>Purity</b>	> 95 % as determined by reducing SDS-PAGE.
<b>Endotoxin</b>	< 1.0 EU per µg of the protein as determined by the LAL method.
<b>Storage</b>	Generally, lyophilized proteins are stable for up to 12 months when stored at -20 to -80°C. Reconstituted protein solution can be stored at 4-8°C for 2-7 days. Aliquots of reconstituted samples are stable at < -20°C for 3 months.
<b>Shipping</b>	This product is provided as lyophilized powder which is shipped with ice packs.
<b>Formulation</b>	Lyophilized from a 0.2 µm filtered solution of PBS, pH 7.4. Normally 5 % - 8 % trehalose, mannitol and 0.01% Tween80 are added as protectants before lyophilization. Please refer to the specific buffer information in the printed manual.
<b>Reconstitution</b>	Please refer to the printed manual for detailed information.

### Data



> 95 % as determined by reducing SDS-PAGE.

### Background

#### For Research Use Only

Lysosome-Associated Membrane Glycoprotein 1 (LAMP1) is a single-pass type I membrane protein belonging to the LAMP family. LAMP1 is expressed largely in the endosome-lysosome membranes of cells. It shuttles between lysosomes; endosomes; and the plasma membrane. LAMP1 functions to present carbohydrate ligands to selectins and it has also been implicated in tumor cell metastasis. It has been proposed LAMP1 can be used as a therapeutic agent for certain cancers; as well as a marker for lysosomal storage disorders and degranulation on lymphocytes such as CD8+ and NK cells. Cell surface LAMP1 and LAMP2 have been shown to promote adhesion of human peripheral blood mononuclear cells (PBMC) to vascular endothelium; therefore they are possibly involved in the adhesion of PBMCs to the site of inflammation.