

Recombinant Human LEFTY2 Protein (His Tag)

Catalog Number:PKSH032686



Note: Centrifuge before opening to ensure complete recovery of vial contents.

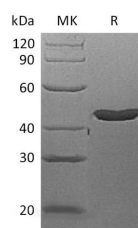
Description

Synonyms	Left-right determination factor 2;Endometrial bleeding-associated factor;Left-right determination factor A;Protein lefty-2;Protein lefty-A;Transforming growth factor beta-4;TGF-beta-4;LEFTY2;EBAF;LEFTA;LEFTYA;TGFB4
Species	Human
Expression Host	HEK293 Cells
Sequence	Phe78-Pro366
Accession	O00292
Calculated Molecular Weight	39.1 kDa
Observed molecular weight	45-50 kDa
Tag	N-His

Properties

Purity	> 90 % as determined by reducing SDS-PAGE.
Endotoxin	< 1.0 EU per µg of the protein as determined by the LAL method.
Storage	Generally, lyophilized proteins are stable for up to 12 months when stored at -20 to -80°C. Reconstituted protein solution can be stored at 4-8°C for 2-7 days. Aliquots of reconstituted samples are stable at < -20°C for 3 months.
Shipping	This product is provided as lyophilized powder which is shipped with ice packs.
Formulation	Lyophilized from a 0.2 µm filtered solution of 20mM Histidine-HCl 4% Sucrose 4% Mannitol 0.1% Tween80 pH6.0. Normally 5 % - 8 % trehalose, mannitol and 0.01 % Tween80 are added as protectants before lyophilization. Please refer to the specific buff
Reconstitution	Please refer to the printed manual for detailed information.

Data



> 90 % as determined by reducing SDS-PAGE.

Background

Left-right determination factor 2(LEFTY2) is a secreted protein which belongs to the TGF-beta family. Lefty was first identified in a screen for undifferentiated cell-specific cDNAs from the P19 mouse embryonal carcinoma cells. Its mRNA expression on the left side of the developing embryo earned the name “Lefty”. The human orthologue was initially identified as Ebafe, Endometrial bleeding associated factor. Lefty contains the six cysteine residues that are conserved among TGF-β related proteins and that are necessary to form the cysteine knot structure. Its function in patterning left-

For Research Use Only

A Reliable Research Partner in Life Science and Medicine

Toll-free: 1-888-852-8623

Web: www.elabscience.com

Tel: 1-832-243-6086

Email: techsupport@elabscience.com

Fax: 1-832-243-6017

Recombinant Human LEFTY2 Protein (His Tag)

Catalog Number:PKSH032686



right asymmetry of the developing organ systems such as the heart and lung is consistent in all vertebrate species examined. Lefty acts as an antagonist to Nodal signaling, potentially by competing for binding to a common receptor. It may play a role in endometrial bleeding.

For Research Use Only

A Reliable Research Partner in Life Science and Medicine

Toll-free: 1-888-852-8623

Tel: 1-832-243-6086

Fax: 1-832-243-6017

Web: www.elabscience.com

Email: techsupport@elabscience.com