

Recombinant Human LRRC25 Protein (His Tag)

Catalog No. PKSH032691

Note: Centrifuge before opening to ensure complete recovery of vial contents.

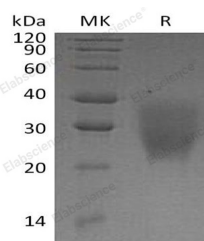
Description

Synonyms	Leucine-rich repeat-containing protein 25; Monocyte and plasmacytoid-activated protein; MAPA; FLJ38116; UNQ6169/PRO20174
Species	Human
Expression Host	HEK293 Cells
Sequence	Leu21-Thr165
Accession	Q8N386
Calculated Molecular Weight	16.7 kDa
Observed molecular weight	20-40 kDa
Tag	C-His
Bioactivity	Not validated for activity

Properties

Purity	> 95 % as determined by reducing SDS-PAGE.
Endotoxin	< 1.0 EU per µg of the protein as determined by the LAL method.
Storage	Generally, lyophilized proteins are stable for up to 12 months when stored at -20 to -80°C. Reconstituted protein solution can be stored at 4-8°C for 2-7 days. Aliquots of reconstituted samples are stable at < -20°C for 3 months.
Shipping	This product is provided as lyophilized powder which is shipped with ice packs.
Formulation	Lyophilized from a 0.2 µm filtered solution of 20mM PB, 150mM NaCl, pH7.4. Normally 5% - 8% trehalose, mannitol and 0.01% Tween 80 are added as protectants before lyophilization. Please refer to the specific buffer information in the printed manual.
Reconstitution	Please refer to the printed manual for detailed information.

Data



> 95 % as determined by reducing SDS-PAGE.

Background

Leucine-rich repeat-containing protein 25 (LRRC25) is a single-pass type I membrane protein and contains 3 LRR

For Research Use Only

(leucine-rich) repeats. The protein expressed in plasmacytoid dendritic cells (PDC), monocyte-derived dendritic cells (MDDC), granulocytes, monocytes, B-lymphocytes, peripheral blood leukocytes, spleen, bone marrow, and, to a lesser extent, lymph nodes, fetal liver, and appendix but not in thymus. The protein may be involved in the activation of cells of innate and acquired immunity.