

# Recombinant Human LRRC25 Protein (His Tag)

Catalog Number:PKSH032691



**Note:** Centrifuge before opening to ensure complete recovery of vial contents.

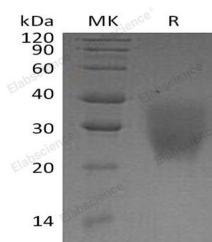
## Description

|                                    |  |
|------------------------------------|--|
| <b>Synonyms</b>                    | Leucine-rich repeat-containing protein 25;Monocyte and plasmacytoid-activated protein;MAPA;FLJ38116;UNQ6169/PRO20174 |
| <b>Species</b>                     | Human  |
| <b>Expression Host</b>             | HEK293 Cells   |
| <b>Sequence</b>                    | Leu21-Thr165   |
| <b>Accession</b>                   | Q8N386   |
| <b>Calculated Molecular Weight</b> | 16.7 kDa   |
| <b>Observed molecular weight</b>   | 20-40 kDa  |
| <b>Tag</b>                         | C-His  |

## Properties

|                       |  |
|-----------------------|--|
| <b>Purity</b>         | > 95 % as determined by reducing SDS-PAGE.   |
| <b>Endotoxin</b>      | < 1.0 EU per µg of the protein as determined by the LAL method.  |
| <b>Storage</b>        | Generally, lyophilized proteins are stable for up to 12 months when stored at -20 to -80°C. Reconstituted protein solution can be stored at 4-8°C for 2-7 days. Aliquots of reconstituted samples are stable at < -20°C for 3 months.                      |
| <b>Shipping</b>       | This product is provided as lyophilized powder which is shipped with ice packs.  |
| <b>Formulation</b>    | Lyophilized from a 0.2 µm filtered solution of 20mM PB,150mM NaCl,pH7.4. Normally 5 % - 8 % trehalose, mannitol and 0.01% Tween80 are added as protectants before lyophilization.<br>Please refer to the specific buffer information in the printed manual |
| <b>Reconstitution</b> | Please refer to the printed manual for detailed information.   |

## Data



> 95 % as determined by reducing SDS-PAGE.

## Background

Leucine-rich repeat-containing protein 25(LRRC25) is a single-pass type I membrane protein and contains 3 LRR (leucine-rich) repeats. The protein expressed in plasmacytoid dendritic cells (PDC), monocyte-derived dendritic cells (MDDC), granulocytes, monocytes, B-lymphocytes, peripheral blood leukocytes, spleen, bone marrow, and, to a lesser extent, lymph nodes, fetal liver, and appendix but not in thymus. The protein may be involved in the activation of cells of innate and acquired immunity.

## For Research Use Only

A Reliable Research Partner in Life Science and Medicine

Toll-free: 1-888-852-8623

Web: [www.elabscience.com](http://www.elabscience.com)

Tel: 1-832-243-6086

Email: [techsupport@elabscience.com](mailto:techsupport@elabscience.com)

Fax: 1-832-243-6017