

Recombinant Human LRG1 Protein (Fc & His Tag)

Catalog Number:PKSH032693



Note: Centrifuge before opening to ensure complete recovery of vial contents.

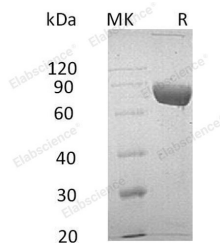
Description

Synonyms	Leucine-rich alpha-2-glycoprotein;HMFT1766;LRG;LRG1
Species	Human
Expression Host	HEK293 Cells
Sequence	Val36-Gln347
Accession	AAH70198.1
Calculated Molecular Weight	62.3 kDa
Observed molecular weight	65-90 kDa
Tag	C-Fc-His

Properties

Purity	> 95 % as determined by reducing SDS-PAGE.
Endotoxin	< 1.0 EU per µg of the protein as determined by the LAL method.
Storage	Store at < -20°C, stable for 6 months. Please minimize freeze-thaw cycles.
Shipping	This product is provided as liquid. It is shipped at frozen temperature with blue ice/gel packs. Upon receipt, store it immediately at < - 20°C.
Formulation	Supplied as a 0.2 µm filtered solution of 20mM Tris-HCl, 200mM NaCl, 10% Glycerol, pH 8.0.
Reconstitution	Not Applicable

Data



> 95 % as determined by reducing SDS-PAGE.

Background

LRG1 is a secreted protein and contains eight LRR repeats and one LRRCT domain; It can be expressed during granulocyte differentiation. LRG1 has been shown to be involved in protein-protein interaction; signal transduction; cell adhesion and development. Levels of the LRG protein are markedly elevated in acute appendicitis and therefore could be used as a diagnostic aid.

For Research Use Only

A Reliable Research Partner in Life Science and Medicine

Toll-free: 1-888-852-8623

Web: www.elabscience.com

Tel: 1-832-243-6086

Email: techsupport@elabscience.com

Fax: 1-832-243-6017