

## Recombinant Human LMIR2/CD300C Protein (His Tag)

**Catalog No.** PKSH032701

**Note:** Centrifuge before opening to ensure complete recovery of vial contents.

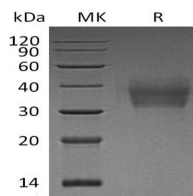
### Description

<b>Synonyms</b>	CMRF35-Like Molecule 6;CLM-6;CD300 Antigen-Like Family Member C;CMRF35-A1;CMRF-35;Immunoglobulin Superfamily Member 16;IgSF16;CD300c;CD300C;CMRF35;CMRF35A;CMRF35A1;IGSF16
<b>Species</b>	Human
<b>Expression Host</b>	HEK293 Cells
<b>Sequence</b>	Gly21-Arg183
<b>Accession</b>	Q08708
<b>Calculated Molecular Weight</b>	18.9 kDa
<b>Observed molecular weight</b>	40 kDa
<b>Tag</b>	C-His
<b>Bioactivity</b>	Not validated for activity

### Properties

<b>Purity</b>	> 95 % as determined by reducing SDS-PAGE.
<b>Endotoxin</b>	< 1.0 EU per µg of the protein as determined by the LAL method.
<b>Storage</b>	Generally, lyophilized proteins are stable for up to 12 months when stored at -20 to -80°C. Reconstituted protein solution can be stored at 4-8°C for 2-7 days. Aliquots of reconstituted samples are stable at < -20°C for 3 months.
<b>Shipping</b>	This product is provided as lyophilized powder which is shipped with ice packs.
<b>Formulation</b>	Lyophilized from a 0.2 µm filtered solution of 20mM PB, 150mM NaCl, pH 7.2. Normally 5% - 8% trehalose, mannitol and 0.01% Tween 80 are added as protectants before lyophilization. Please refer to the specific buffer information in the printed manual.
<b>Reconstitution</b>	Please refer to the printed manual for detailed information.

### Data



> 95 % as determined by reducing SDS-PAGE.

### Background

#### For Research Use Only

CD300C is a single-pass type I membrane protein which belongs to the immunoregulatory signaling (IRS) family. CD300C contains one Ig-like V-type domain and is present on the surface of natural killer cells; granulocytes; most myeloid cells; dendritic cells; and a subpopulation of T and B lymphocytes. The CD300C (CMRF-35A) and CD300A (CMRF-35H) molecules are homologous leukocyte surface proteins. CD300a and CD300C play an important role in the cross-regulation of TNF-alpha and IFN-alpha secretion from pDCs. CD300A and CD300C are indistinguishable on the surface of NK cells. The ligand for CD300C is presently unknown.