

# Recombinant Human INSL3 Protein (His Tag)

Catalog Number:PKSH032705



**Note:** Centrifuge before opening to ensure complete recovery of vial contents.

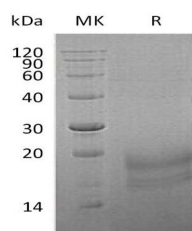
## Description

<b>Synonyms</b>	Insulin-like 3;Leydig insulin-like peptide;Relaxin-like factor;INSL3;RLF;RLNL
<b>Species</b>	Human
<b>Expression Host</b>	HEK293 Cells
<b>Sequence</b>	Leu21-Tyr131
<b>Accession</b>	AAI06722.1
<b>Calculated Molecular Weight</b>	13.4 kDa
<b>Observed molecular weight</b>	13-25 kDa
<b>Tag</b>	C-His

## Properties

<b>Purity</b>	> 95 % as determined by reducing SDS-PAGE.
<b>Endotoxin</b>	< 1.0 EU per µg of the protein as determined by the LAL method.
<b>Storage</b>	Generally, lyophilized proteins are stable for up to 12 months when stored at -20 to -80°C. Reconstituted protein solution can be stored at 4-8°C for 2-7 days. Aliquots of reconstituted samples are stable at < -20°C for 3 months.
<b>Shipping</b>	This product is provided as lyophilized powder which is shipped with ice packs.
<b>Formulation</b>	Lyophilized from a 0.2 µm filtered solution of 20mM PB, 150mM NaCl, pH 7.4. Normally 5 % - 8 % trehalose, mannitol and 0.01% Tween80 are added as protectants before lyophilization. Please refer to the specific buffer information in the printed man
<b>Reconstitution</b>	Please refer to the printed manual for detailed information.

## Data



> 95 % as determined by reducing SDS-PAGE.

## Background

Insulin-like 3 is a protein that in humans is encoded by the INSL3 gene. It is a secreted protein that belongs to the insulin family. It is expressed in prenatal and postnatal Leydig cells and found as well in the corpus luteum, trophoblast, fetal membranes and breast. It may act as a hormone to regulate growth and differentiation of gubernaculum, and thus mediating intra-abdominal testicular descent. It is a ligand for LGR8 receptor.

## For Research Use Only

A Reliable Research Partner in Life Science and Medicine

Toll-free: 1-888-852-8623

Web: [www.elabscience.com](http://www.elabscience.com)

Tel: 1-832-243-6086

Email: [techsupport@elabscience.com](mailto:techsupport@elabscience.com)

Fax: 1-832-243-6017