

Recombinant Human LMCD1/Dyxin Protein (His Tag)

Catalog Number:PKSH032706



Note: Centrifuge before opening to ensure complete recovery of vial contents.

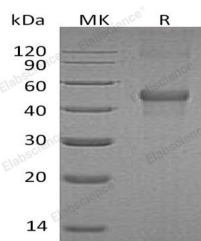
Description

Synonyms	LIM and cysteine-rich domains protein 1;LMCD1;Dyxin
Species	Human
Expression Host	E.coli
Sequence	Met 1-Ser365
Accession	Q9NZU5
Calculated Molecular Weight	44.0 kDa
Observed molecular weight	45 kDa
Tag	N-His & C-His

Properties

Purity	> 95 % as determined by reducing SDS-PAGE.
Endotoxin	< 1.0 EU per µg of the protein as determined by the LAL method.
Storage	Store at < -20°C, stable for 6 months. Please minimize freeze-thaw cycles.
Shipping	This product is provided as liquid. It is shipped at frozen temperature with blue ice/gel packs. Upon receipt, store it immediately at < - 20°C.
Formulation	Supplied as a 0.2 µm filtered solution of 20mM Tris-HCl, 150mM NaCl, 1mM EDTA, pH 8.0.
Reconstitution	Not Applicable

Data



> 95 % as determined by reducing SDS-PAGE.

Background

LMCD1 is transcriptional cofactor which contains a cysteine-rich domain in the N-terminal region and 2 LIM domains in the C-terminal region. It also has several potential phosphorylation and N-myristoylation sites and a single potential N-glycosylation site. LMCD1 is expressed in many tissues with highest abundance in skeletal muscle. LMCD1 restricts GATA6 function by inhibiting DNA-binding, resulting in repression of GATA6 transcriptional activation of downstream target genes. It plays a critical role in the development of cardiac hypertrophy via activation of calcineurin/nuclear factor of activated T-cells signaling pathway.

For Research Use Only

A Reliable Research Partner in Life Science and Medicine

Toll-free: 1-888-852-8623

Web: www.elabscience.com

Tel: 1-832-243-6086

Email: techsupport@elabscience.com

Fax: 1-832-243-6017