

Recombinant Human LRP12 Protein (His Tag)

Catalog Number:PKSH032710



Note: Centrifuge before opening to ensure complete recovery of vial contents.

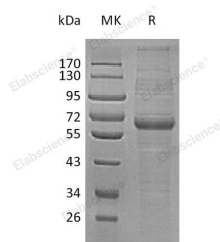
Description

Synonyms	Low-Density Lipoprotein Receptor-Related Protein 12;LRP-12;Suppressor of Tumorigenicity 7 Protein;LRP12;ST7
Species	Human
Expression Host	HEK293 Cells
Sequence	Asn28-Ile488
Accession	Q9Y561
Calculated Molecular Weight	52.5 kDa
Observed molecular weight	68 kDa
Tag	C-His

Properties

Purity	> 95 % as determined by reducing SDS-PAGE.
Endotoxin	< 1.0 EU per µg of the protein as determined by the LAL method.
Storage	Generally, lyophilized proteins are stable for up to 12 months when stored at -20 to -80°C. Reconstituted protein solution can be stored at 4-8°C for 2-7 days. Aliquots of reconstituted samples are stable at < -20°C for 3 months.
Shipping	This product is provided as lyophilized powder which is shipped with ice packs.
Formulation	Lyophilized from a 0.2 µm filtered solution of 20mM PB, 150mM NaCl, pH 7.2. Normally 5 % - 8 % trehalose, mannitol and 0.01% Tween80 are added as protectants before lyophilization. Please refer to the specific buffer information in the printed manual
Reconstitution	Please refer to the printed manual for detailed information.

Data



> 95 % as determined by reducing SDS-PAGE.

Background

Low-Density Lipoprotein Receptor-Related Protein 12 (LRP12) belongs to the LDLR family. LRP12 is a type I transmembrane protein and widely expressed in heart, skeletal muscle, brain, lung, placenta and pancreas. LRP12 contains 2 CUB domain and 5 LDL-receptor class A domain. LRP12 has been shown to interact with GNB2L1, ZFYVE9 and ITGB1BP3. LRP12 is a receptor probably, which may be involved in the internalization of lipophilic molecules and/or signal transduction. In addition, LRP12 may act as a tumor suppressor.

For Research Use Only

A Reliable Research Partner in Life Science and Medicine

Toll-free: 1-888-852-8623

Web: www.elabscience.com

Tel: 1-832-243-6086

Email: techsupport@elabscience.com

Fax: 1-832-243-6017