

Recombinant Human Lumican/LUM Protein (His Tag)

Catalog Number:PKSH032713



Note: Centrifuge before opening to ensure complete recovery of vial contents.

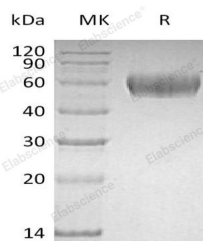
Description

Synonyms	Lumican;Keratan Sulfate Proteoglycan Lumican;KSPG Lumican;LUM;LDC;SLRR2D
Species	Human
Expression Host	HEK293 Cells
Sequence	Gln19-Asn338
Accession	P51884
Calculated Molecular Weight	37.7 kDa
Observed molecular weight	40-60 kDa
Tag	C-His

Properties

Purity	> 95 % as determined by reducing SDS-PAGE.
Endotoxin	< 1.0 EU per µg of the protein as determined by the LAL method.
Storage	Generally, lyophilized proteins are stable for up to 12 months when stored at -20 to -80°C. Reconstituted protein solution can be stored at 4-8°C for 2-7 days. Aliquots of reconstituted samples are stable at < -20°C for 3 months.
Shipping	This product is provided as lyophilized powder which is shipped with ice packs.
Formulation	Lyophilized from a 0.2 µm filtered solution of 20mM PB, 150mM NaCl, 1mM EDTA, pH 7.2. Normally 5 % - 8 % trehalose, mannitol and 0.01% Tween80 are added as protectants before lyophilization. Please refer to the specific buffer information in the p
Reconstitution	Please refer to the printed manual for detailed information.

Data



> 95 % as determined by reducing SDS-PAGE.

Background

Lumican is a 40 kD secreted protein which belongs to the small leucine-rich repeat proteoglycans (SLRPs) and the class II subfamily. Human Lumican is synthesized as a 338 amino acid precursor then cut the 18 aa signal sequence. The mature Human Lumican contains 12 leucine-rich repeats (LRRs), 4 potential sites of N-linked glycosylation, and a C- terminal with two conserved cysteines. Lumican can be existed in extracellular matrix of human articular cartilage. Lumican participates in the maintenance of tissue homeostasis and regulates cellular functions in vivo, such as cell proliferation, adhesion, migration, and differentiation. The overexpression of lumican has been correlated to colorectal tumor, breast,

For Research Use Only

A Reliable Research Partner in Life Science and Medicine

Toll-free: 1-888-852-8623

Web: www.elabscience.com

Tel: 1-832-243-6086

Email: techsupport@elabscience.com

Fax: 1-832-243-6017

Recombinant Human Lumican/LUM Protein (His Tag)

Catalog Number:PKSH032713



neuroendocrine, and pancreatic cancers.

For Research Use Only

A Reliable Research Partner in Life Science and Medicine

Toll-free: 1-888-852-8623

Tel: 1-832-243-6086

Fax: 1-832-243-6017

Web: www.elabscience.com

Email: techsupport@elabscience.com