

Recombinant Human PRCP Protein (His Tag)

Catalog Number:PKSH032721



Note: Centrifuge before opening to ensure complete recovery of vial contents.

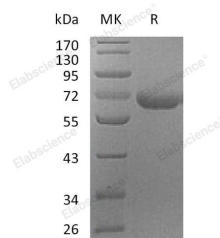
Description

Synonyms	Lysosomal Pro-X Carboxypeptidase;Angiotensinase C;Lysosomal Carboxypeptidase C;Proline Carboxypeptidase;Prolylcarboxypeptidase;PRCP;PRCP;PCP
Species	Human
Expression Host	HEK293 Cells
Sequence	Leu22-His496
Accession	P42785
Calculated Molecular Weight	54.5 kDa
Observed molecular weight	60-90 kDa
Tag	C-His

Properties

Purity	> 95 % as determined by reducing SDS-PAGE.
Endotoxin	< 1.0 EU per µg of the protein as determined by the LAL method.
Storage	Store at < -20°C, stable for 6 months. Please minimize freeze-thaw cycles.
Shipping	This product is provided as liquid. It is shipped at frozen temperature with blue ice/gel packs. Upon receipt, store it immediately at < - 20°C.
Formulation	Supplied as a 0.2 µm filtered solution of 20mM NaAc-HAc, 150mM NaCl, 10% Glycerol, pH4.5.
Reconstitution	Not Applicable

Data



> 95 % as determined by reducing SDS-PAGE.

Background

Lysosomal Pro-X Carboxypeptidase (PRCP) belongs to the peptidase S28 family. PRCP is detected in many tissues, with highest levels observed in placenta, lung, and liver. It is also present in the heart, brain, pancreas, and kidney. PRCP exists as a homodimer. PRCP cleaves C-terminal amino acids linked to proline in peptides such as angiotensin II, III and des-Arg9-bradykinin. This cleavage occurs at acidic pH, but enzymatic activity is retained with some substrates at neutral pH. PRCP has been shown to be an activator of the cell matrix-associated peptidase kallikrein.

For Research Use Only

A Reliable Research Partner in Life Science and Medicine

Toll-free: 1-888-852-8623

Web: www.elabscience.com

Tel: 1-832-243-6086

Email: techsupport@elabscience.com

Fax: 1-832-243-6017