

Recombinant Human LYVE1/HAR Protein (His Tag)

Catalog Number:PKSH032725



Note: Centrifuge before opening to ensure complete recovery of vial contents.

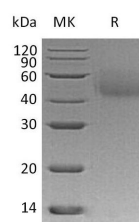
Description

Synonyms	Lymphatic Vessel Endothelial Hyaluronic Acid Receptor 1;LYVE-1;Cell Surface Retention Sequence-Binding Protein 1;CRSBP-1;Extracellular Link Domain-Containing Protein 1;Hyaluronic Acid Receptor;LYVE1;CRSBP1;HAR;XLKD1
Species	Human
Expression Host	HEK293 Cells
Sequence	Leu20-Thr 238
Accession	AAH26231.1
Calculated Molecular Weight	24.6 kDa
Observed molecular weight	46 kDa
Tag	C-His

Properties

Purity	> 95 % as determined by reducing SDS-PAGE.
Endotoxin	< 1.0 EU per µg of the protein as determined by the LAL method.
Storage	Generally, lyophilized proteins are stable for up to 12 months when stored at -20 to -80°C. Reconstituted protein solution can be stored at 4-8°C for 2-7 days. Aliquots of reconstituted samples are stable at < -20°C for 3 months.
Shipping	This product is provided as lyophilized powder which is shipped with ice packs.
Formulation	Lyophilized from a 0.2 µm filtered solution of 20mM Tris-Citrate, 150mM NaCl, pH 7.0. Normally 5 % - 8 % trehalose, mannitol and 0.01% Tween80 are added as protectants before lyophilization. Please refer to the specific buffer information in the p
Reconstitution	Please refer to the printed manual for detailed information.

Data



> 95 % as determined by reducing SDS-PAGE.

Background

Lymphatic Vessel Endothelial Hyaluronic Acid Receptor 1 is a single-pass type I membrane protein. LYVE-1 is a CD44 homolog found primarily on lymphatic endothelial cells. LYVE-1 is mainly expressed in endothelial cells lining lymphatic vessels. While LYVE-1 functions as a Ligand-specific transporter trafficking between intracellular organelles (TGN) and the plasma membrane. LYVE-1 plays a role in autocrine regulation of cell growth mediated by growth regulators containing cell surface retention sequence binding (CRS). It may act as an hyaluronan (HA) transporter, either mediating

For Research Use Only

A Reliable Research Partner in Life Science and Medicine

Toll-free: 1-888-852-8623

Web: www.elabscience.com

Tel: 1-832-243-6086

Email: techsupport@elabscience.com

Fax: 1-832-243-6017

Recombinant Human LYVE1/HAR Protein (His Tag)

Catalog Number:PKSH032725



its uptake for catabolism within lymphatic endothelial cells themselves, or its transport into the lumen of afferent lymphatic vessels for subsequent re-uptake and degradation in lymph nodes.

For Research Use Only

A Reliable Research Partner in Life Science and Medicine

Toll-free: 1-888-852-8623

Tel: 1-832-243-6086

Fax: 1-832-243-6017

Web: www.elabscience.com

Email: techsupport@elabscience.com