

Recombinant Human LAMTOR3/MP1 Protein (His Tag)

Catalog No. PKSH032742

Note: Centrifuge before opening to ensure complete recovery of vial contents.

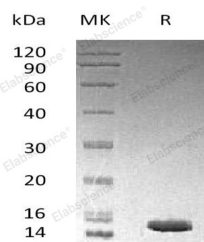
Description

Synonyms	Regulator Complex Protein LAMTOR3;Late Endosomal/Lysosomal Adaptor and MAPK and MTOR Activator 3;MEK-Binding Partner 1;Mp1;Mitogen-Activated Protein Kinase Kinase 1-Interacting Protein 1;Mitogen-Activated Protein Kinase Scaffold Protein 1;LAMTOR3;MAP2K1IP1;MAPKSP1
Species	Human
Expression Host	E.coli
Sequence	Met 1-Val124
Accession	Q9UHA4
Calculated Molecular Weight	15.8 kDa
Observed molecular weight	15 kDa
Tag	N-His
Bioactivity	Not validated for activity

Properties

Purity	> 95 % as determined by reducing SDS-PAGE.
Endotoxin	< 1.0 EU per µg of the protein as determined by the LAL method.
Storage	Store at < -20°C, stable for 6 months. Please minimize freeze-thaw cycles.
Shipping	This product is provided as liquid. It is shipped at frozen temperature with blue ice/gel packs. Upon receipt, store it immediately at < -20°C.
Formulation	Supplied as a 0.2 µm filtered solution of 20mM Tris-HCl, 100mM NaCl, 5mM DTT, 30% Glycerol, pH 8.0.
Reconstitution	Not Applicable

Data



> 95 % as determined by reducing SDS-PAGE.

Background

Mitogen-Activated Protein Kinase Scaffold Protein 1 (MAPKSP1) was identified as an interacting protein that belongs to the LAMTOR3 family. MAPKSP1 restricted to late endosomes by the mitogen-activated protein-binding protein-

For Research Use Only

interacting protein, and binds specifically to MAP kinase kinase MAP2K1/MEK1, MAP kinase MAPK3/ERK1, and MAP kinase MAPK1/ERK2. MAPKSP1 interacts with MAP2K1/MEK1 and MAPK2 and enhances the activation of MAPK2, and thus is thought to function as an adaptor to enhance the efficiency of the MAP kinase cascade.