

# Recombinant Human Mesothelin/MSLN Protein (aa 37-286, <sup>cd9</sup> Fc Tag)

**DIA • AN**<sup>®</sup>  
by Elabscience

Catalog Number:PKSH032747

**Note:** Centrifuge before opening to ensure complete recovery of vial contents.

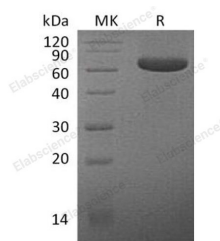
## Description

<b>Synonyms</b>	Megakaryocyte potentiating factor;mesothelin;Pre-pro-megakaryocyte-potentiating factor;soluble MPF mesothelin related protein;CAK1;MPF;MSLN;SMR;CAK1;CAK1 antigen
<b>Species</b>	Human
<b>Expression Host</b>	HEK293 Cells
<b>Sequence</b>	Leu37-Arg286
<b>Accession</b>	Q13421
<b>Calculated Molecular Weight</b>	53.9 kDa
<b>Observed molecular weight</b>	55-75 kDa
<b>Tag</b>	C-Fc

## Properties

<b>Purity</b>	> 90 % as determined by reducing SDS-PAGE.
<b>Endotoxin</b>	< 1.0 EU per µg of the protein as determined by the LAL method.
<b>Storage</b>	Generally, lyophilized proteins are stable for up to 12 months when stored at -20 to -80°C. Reconstituted protein solution can be stored at 4-8°C for 2-7 days. Aliquots of reconstituted samples are stable at < -20°C for 3 months.
<b>Shipping</b>	This product is provided as lyophilized powder which is shipped with ice packs.
<b>Formulation</b>	Lyophilized from a 0.2 µm filtered solution of PBS, pH 7.4. Normally 5 % - 8 % trehalose, mannitol and 0.01% Tween80 are added as protectants before lyophilization. Please refer to the specific buffer information in the printed manual.
<b>Reconstitution</b>	Please refer to the printed manual for detailed information.

## Data



> 90 % as determined by reducing SDS-PAGE.

## Background

Mesothelin is a cell surface glycoprotein whose expression is limited to mesothelial cells of the serosa (pleura; pericardium; and peritoneum) and epithelial cells of the trachea; tonsils; fallopian tube; and kidneys. Mesothelin plays an important role in cell survival; proliferation; migration; invasion; tumor progression; and resistance to chemotherapy. The overexpression of mesothelin can activate NF-κB and signal transducer and activator of transcription 3 (Stat3); inhibit apoptotic signaling and TNF-α-induced apoptosis; and accelerate the G1-S transition. Mesothelin is also found overexpressed in various cancers; including malignant mesothelioma; pancreatic or ovarian carcinoma; sarcomas and in

## For Research Use Only

A Reliable Research Partner in Life Science and Medicine

Toll-free: 1-888-852-8623

Web: [www.elabscience.com](http://www.elabscience.com)

Tel: 1-832-243-6086

Email: [techsupport@elabscience.com](mailto:techsupport@elabscience.com)

Fax: 1-832-243-6017

# Recombinant Human Mesothelin/MSLN Protein (aa 37-286, <sup>dg</sup> Fc Tag)



Catalog Number:PKSH032747

---

some gastrointestinal or pulmonary carcinomas. As a result of its limited expression in normal tissues; mesothelin has been reported as an ideal tumor-associated marker for the development of targeted therapy.

---

## For Research Use Only

A Reliable Research Partner in Life Science and Medicine

Toll-free: 1-888-852-8623

Tel: 1-832-243-6086

Fax: 1-832-243-6017

Web: [www.elabscience.com](http://www.elabscience.com)

Email: [techsupport@elabscience.com](mailto:techsupport@elabscience.com)