

Recombinant Human MOB1A Protein (His Tag)

Catalog Number:PKSH032759



Note: Centrifuge before opening to ensure complete recovery of vial contents.

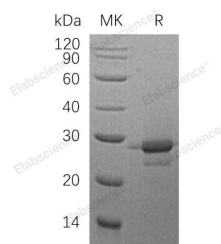
Description

Synonyms	MOB Kinase Activator 1A; Mob1 Alpha; Mob1A; Mob1 Homolog 1B; Mps One Binder Kinase Activator-like 1B; MOB1A; C2orf6; MOB4B; MOBK1B; MOBKL1B
Species	Human
Expression Host	E.coli
Sequence	Ser2-Arg216
Accession	Q9H8S9
Calculated Molecular Weight	26.0 kDa
Observed molecular weight	29 kDa
Tag	C-His

Properties

Purity	> 95 % as determined by reducing SDS-PAGE.
Endotoxin	< 1.0 EU per µg of the protein as determined by the LAL method.
Storage	Generally, lyophilized proteins are stable for up to 12 months when stored at -20 to -80°C. Reconstituted protein solution can be stored at 4-8°C for 2-7 days. Aliquots of reconstituted samples are stable at < -20°C for 3 months.
Shipping	This product is provided as lyophilized powder which is shipped with ice packs.
Formulation	Lyophilized from a 0.2 µm filtered solution of 20mM Tris-HCl, 150mM NaCl, pH 8.0. Normally 5 % - 8 % trehalose, mannitol and 0.01% Tween80 are added as protectants before lyophilization. Please refer to the specific buffer information in the print
Reconstitution	Please refer to the printed manual for detailed information.

Data



> 95 % as determined by reducing SDS-PAGE.

Background

MOB Kinase Activator 1A (MOB1A) belongs to the MOB1/phocein family, which acts as an activator of LATS1/2 in the Hippo signaling pathway, plays a key role in organ size control and tumor suppression by restricting proliferation and promoting apoptosis. MOBKL1B stimulates the kinase activity of STK38 and STK38L. MOBKL1B binds to and regulate downstream targets such as the NDR-family protein kinases and LATS1 kinase.

For Research Use Only

A Reliable Research Partner in Life Science and Medicine

Toll-free: 1-888-852-8623

Web: www.elabscience.com

Tel: 1-832-243-6086

Email: techsupport@elabscience.com

Fax: 1-832-243-6017