

Recombinant Human MOB4/MOBKL3 Protein (His Tag)



Catalog Number:PKSH032760

Note: Centrifuge before opening to ensure complete recovery of vial contents.

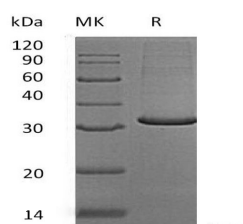
Description

Synonyms	MOB-Like Protein Phoecin;2C4D;Class II mMOB1;Mob1 Homolog 3;Mob3;Mps One Binder Kinase Activator-Like 3;Preimplantation Protein 3;MOB4;MOB3;MOBKL3;PHOCN;PREI3
Species	Human
Expression Host	E.coli
Sequence	Met 1-Ala225
Accession	Q9Y3A3
Calculated Molecular Weight	28.2 kDa
Observed molecular weight	27-33 kDa
Tag	N-His

Properties

Purity	> 90 % as determined by reducing SDS-PAGE.
Endotoxin	< 1.0 EU per µg of the protein as determined by the LAL method.
Storage	Generally, lyophilized proteins are stable for up to 12 months when stored at -20 to -80°C. Reconstituted protein solution can be stored at 4-8°C for 2-7 days. Aliquots of reconstituted samples are stable at < -20°C for 3 months.
Shipping	This product is provided as lyophilized powder which is shipped with ice packs.
Formulation	Lyophilized from a 0.2 µm filtered solution of 20mM Tris-HCl, 150mM NaCl, 1mM DTT, pH 8.0. Normally 5 % - 8 % trehalose, mannitol and 0.01 % Tween80 are added as protectants before lyophilization. Please refer to the specific buffer information in
Reconstitution	Please refer to the printed manual for detailed information.

Data



> 90 % as determined by reducing SDS-PAGE.

Background

MOB-Like Protein Phoecin is a member of the MOB1/Phoecin Family. MOB-Like Protein Phoecin is associated with membranes and the Golgi stacks. It is present in the cytosol, where it behaves as a protein complex. It has been shown that MOB-Like Protein Phoecin interacts with DNM1, EPS15 and Nucleoside Diphosphate Kinase. MOB-Like Protein Phoecin is the major partner of Striatin Family members and may play a important role in membrane trafficking, specifically in membrane budding reactions.

For Research Use Only

A Reliable Research Partner in Life Science and Medicine

Toll-free: 1-888-852-8623

Web: www.elabscience.com

Tel: 1-832-243-6086

Email: techsupport@elabscience.com

Fax: 1-832-243-6017