

Recombinant Human SGSH Protein (His Tag)

Catalog No. PKSH032823

Note: Centrifuge before opening to ensure complete recovery of vial contents.

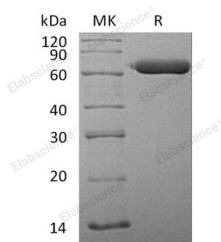
Description

| | |
|------------------------------------|--|
| Synonyms | N-Sulphoglucosamine Sulphohydrolase;Sulfoglucosamine Sulfamidase;Sulphamidase;SGSH;HSS |
| Species | Human |
| Expression Host | HEK293 Cells |
| Sequence | Arg21-Leu502 |
| Accession | P51688 |
| Calculated Molecular Weight | 55.7 kDa |
| Observed molecular weight | 63 kDa |
| Tag | C-His |
| Bioactivity | Not validated for activity |

Properties

| | |
|-----------------------|---|
| Purity | > 95 % as determined by reducing SDS-PAGE. |
| Endotoxin | < 1.0 EU per µg of the protein as determined by the LAL method. |
| Storage | Store at < -20°C, stable for 6 months. Please minimize freeze-thaw cycles. |
| Shipping | This product is provided as liquid. It is shipped at frozen temperature with blue ice/gel packs. Upon receipt, store it immediately at < -20°C. |
| Formulation | Supplied as a 0.2 µm filtered solution of 20mM Tris-HCl, 150mM NaCl, 1mM CaCl ₂ , 10% Glycerol, pH 7.5. |
| Reconstitution | Not Applicable |

Data



> 95 % as determined by reducing SDS-PAGE.

Background

N-Sulphoglucosamine Sulphohydrolase (SGSH) is an important member of the sulfatase family which is involved in the degradation of heparin sulfate. SGSH binds one calcium ion per subunit as a cofactor. SGSH catalyzes N-sulfo-D-glucosamine and H₂O to D-glucosamine and sulfate. SGSH deficiency is result in mucopolysaccharidosis type 3A (MPS3A), a recessive lysosomal storage disease characterized by neurological dysfunction but relatively mild somatic

For Research Use Only

manifestations.

For Research Use Only

Toll-free: 1-888-852-8623

Web: www.elabscience.com

Tel: 1-832-243-6086

Email: techsupport@elabscience.com

Fax: 1-832-243-6017