

Recombinant Human Intelectin-1/ITLN1 Protein (His Tag)

Catalog No. PKSH032833

Note: Centrifuge before opening to ensure complete recovery of vial contents.

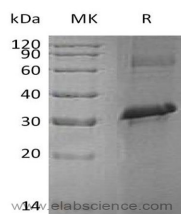
Description

Synonyms	Intelectin-1; ITLN-1; Endothelial lectin HL-1; Galactofuranose-binding lectin; Intestinal lactoferrin receptor; Omentin; INTL; ITLN; LFR
Species	Human
Expression Host	E.coli
Sequence	Thr19-Ser298
Accession	Q8WWA0
Calculated Molecular Weight	32.7 kDa
Observed molecular weight	35 kDa
Tag	N-6His

Properties

Purity	> 90 % as determined by reducing SDS-PAGE.
Storage	Generally, lyophilized proteins are stable for up to 12 months when stored at -20 to -80°C. Reconstituted protein solution can be stored at 4-8°C for 2-7 days. Aliquots of reconstituted samples are stable at < -20°C for 3 months.
Shipping	This product is provided as lyophilized powder which is shipped with ice packs.
Formulation	Lyophilized from a 0.2 µm filtered solution of 50mM Tris, 100mM NaCl, 5mM GSH, 0.5mM GSSG, pH 8.0.
Reconstitution	Please refer to the printed manual for detailed information.

Data



Background

Intelectin-1 (ITLN1) is a secreted protein and contains 1 fibrinogen C-terminal domain. Intelectin-1 is a 40 kDa Ca-dependent galactofuranose-binding lectin that is not a C-type lectin. It is expressed on multiple cell types and appears to participate in insulin signaling and microbe recognition. The protein has no effect on basal glucose uptake but enhances insulin-stimulated glucose uptake in adipocytes. It increases AKT phosphorylation in the absence and presence of insulin and it may play a role in the defense system against microorganisms. It also may specifically recognize carbohydrate chains

For Research Use Only

of pathogens and bacterial components containing galactofuranosyl residues, in a calcium-dependent manner.