

# Recombinant Human Osteocrin/OSTN Protein (His Tag)

Catalog Number:PKSH032838



**Note:** Centrifuge before opening to ensure complete recovery of vial contents.

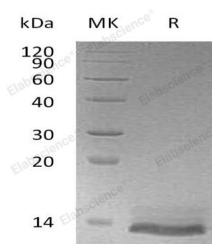
## Description

<b>Synonyms</b>	Osteocrin;Musclin;OSTN
<b>Species</b>	Human
<b>Expression Host</b>	E.coli
<b>Sequence</b>	Val28-Gly133
<b>Accession</b>	P61366
<b>Calculated Molecular Weight</b>	14.0 kDa
<b>Observed molecular weight</b>	12 kDa
<b>Tag</b>	N-His

## Properties

<b>Purity</b>	> 95 % as determined by reducing SDS-PAGE.
<b>Endotoxin</b>	< 1.0 EU per µg of the protein as determined by the LAL method.
<b>Storage</b>	Generally, lyophilized proteins are stable for up to 12 months when stored at -20 to -80°C. Reconstituted protein solution can be stored at 4-8°C for 2-7 days. Aliquots of reconstituted samples are stable at < -20°C for 3 months.
<b>Shipping</b>	This product is provided as lyophilized powder which is shipped with ice packs.
<b>Formulation</b>	Lyophilized from a 0.2 µm filtered solution of 20mM Tris-HCl, 150mM NaCl, pH 8.0. Normally 5 % - 8 % trehalose, mannitol and 0.01 % Tween80 are added as protectants before lyophilization. Please refer to the specific buffer information in the print
<b>Reconstitution</b>	Please refer to the printed manual for detailed information.

## Data



> 95 % as determined by reducing SDS-PAGE.

## Background

Osteocrin is a secreted protein which is primarily expressed in bone and muscle. It is synthesized as a proprotein that undergoes proteolytic processing to generate a mature 50 amino acid C-terminal active peptide. Human Osteocrin proprotein shares 77% and 78% amino acid sequence identity with the rat and mouse protein, respectively. It appears to modulate osteoblastic differentiation. It could also function as an autocrine and paracrine factor linked to glucose metabolism in skeletal muscle.

## For Research Use Only

A Reliable Research Partner in Life Science and Medicine

Toll-free: 1-888-852-8623

Web: [www.elabscience.com](http://www.elabscience.com)

Tel: 1-832-243-6086

Email: [techsupport@elabscience.com](mailto:techsupport@elabscience.com)

Fax: 1-832-243-6017