

# Recombinant Human PACSIN1/Syndapin-1 Protein (His Tag)



Catalog Number:PKSH032845

**Note:** Centrifuge before opening to ensure complete recovery of vial contents.

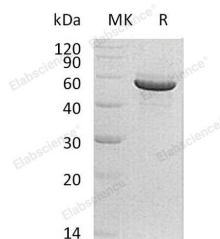
## Description

<b>Synonyms</b>	Protein Kinase C and Casein Kinase Substrate in Neurons Protein 1;PACSIN1;KIAA1379
<b>Species</b>	Human
<b>Expression Host</b>	HEK293 Cells
<b>Sequence</b>	Met 1-Ile444
<b>Accession</b>	Q9BY11
<b>Calculated Molecular Weight</b>	52.0 kDa
<b>Observed molecular weight</b>	50-67 kDa
<b>Tag</b>	C-His

## Properties

<b>Purity</b>	> 95 % as determined by reducing SDS-PAGE.
<b>Endotoxin</b>	< 1.0 EU per µg of the protein as determined by the LAL method.
<b>Storage</b>	Store at < -20°C, stable for 6 months. Please minimize freeze-thaw cycles.
<b>Shipping</b>	This product is provided as liquid. It is shipped at frozen temperature with blue ice/gel packs. Upon receipt, store it immediately at < - 20°C.
<b>Formulation</b>	Supplied as a 0.2 µm filtered solution of 20mM PB, 150mM NaCl, pH 7.4.
<b>Reconstitution</b>	Not Applicable

## Data



> 95 % as determined by reducing SDS-PAGE.

## Background

Protein Kinase C and Casein Kinase Substrate in Neurons Protein 1 (PACSIN1) belongs to the PACSIN family. PACSIN1 contains one FCH domain and one SH3 domain. PACSIN1 is highly expressed in the brain and at lower levels in the heart, pancreas, and liver. PACSIN1 may play a role in vesicle formation and transport. PACSIN1 has been shown to interact with DNMI1, PACSIN3, Huntingtin, and PACSIN2. In addition, PACSIN1 is phosphorylated by casein kinase 2 (CK2) and protein kinase C (PKC).

## For Research Use Only

A Reliable Research Partner in Life Science and Medicine

Toll-free: 1-888-852-8623

Web: [www.elabscience.com](http://www.elabscience.com)

Tel: 1-832-243-6086

Email: [techsupport@elabscience.com](mailto:techsupport@elabscience.com)

Fax: 1-832-243-6017