

Recombinant Human PAFAH1B2/PAFAHB Protein (His Tag)



Catalog Number:PKSH032847

Note: Centrifuge before opening to ensure complete recovery of vial contents.

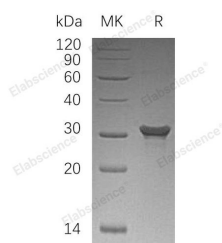
Description

Synonyms	Platelet-Activating Factor Acetylhydrolase IB Subunit Beta;PAF Acetylhydrolase 30 kDa Subunit;PAF-AH 30 kDa Subunit;PAF-AH Subunit Beta;PAFAH Subunit Beta;PAFAH1B2;PAFAHB
Species	Human
Expression Host	E.coli
Sequence	Ser2-Ala229
Accession	P68402
Calculated Molecular Weight	26.6 kDa
Observed molecular weight	31 kDa
Tag	C-His

Properties

Purity	> 95 % as determined by reducing SDS-PAGE.
Endotoxin	< 1.0 EU per µg of the protein as determined by the LAL method.
Storage	Store at < -20°C, stable for 6 months. Please minimize freeze-thaw cycles.
Shipping	This product is provided as liquid. It is shipped at frozen temperature with blue ice/gel packs. Upon receipt, store it immediately at < - 20°C.
Formulation	Supplied as a 0.2 µm filtered solution of 20mM Tris-HCl, 150mM NaCl, pH 8.0.
Reconstitution	Not Applicable

Data



> 95 % as determined by reducing SDS-PAGE.

Background

Platelet-Activating Factor Acetylhydrolase IB Subunit β (PAFAHB) is a cytoplasmic hydrolase. PAFAHB is a member of the GDSL lipolytic enzyme family. It also belongs to Platelet-activating factor acetylhydrolase IB beta/gamma subunits subfamily. Cytosolic PAF-AH IB is formed of three subunits of 45 kDa (alpha), 30 kDa (beta) and 29 kDa (gamma), PAFAHB is a catalytic subunit. PAFAHB inactivates PAF by removing the acetyl group at the sn-2 position.

For Research Use Only

A Reliable Research Partner in Life Science and Medicine

Toll-free: 1-888-852-8623

Web: www.elabscience.com

Tel: 1-832-243-6086

Email: techsupport@elabscience.com

Fax: 1-832-243-6017