

Recombinant Human PNLIPRP1/PLRP1 Protein (His Tag)

DIA • AN[®]
by Elabscience

Catalog Number:PKSH032849

Note: Centrifuge before opening to ensure complete recovery of vial contents.

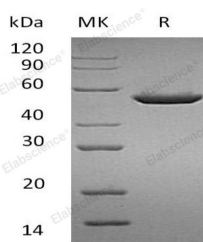
Description

Synonyms	Pancreatic Lipase-Related Protein 1;PL-RP1;PNLIPRP1;PLRP1
Species	Human
Expression Host	HEK293 Cells
Sequence	Lys18-Cys467
Accession	AAH25784.1
Calculated Molecular Weight	51.0 kDa
Observed molecular weight	44-50 kDa
Tag	C-His

Properties

Purity	> 90 % as determined by reducing SDS-PAGE.
Endotoxin	< 1.0 EU per µg of the protein as determined by the LAL method.
Storage	Generally, lyophilized proteins are stable for up to 12 months when stored at -20 to -80°C. Reconstituted protein solution can be stored at 4-8°C for 2-7 days. Aliquots of reconstituted samples are stable at < -20°C for 3 months.
Shipping	This product is provided as lyophilized powder which is shipped with ice packs.
Formulation	Lyophilized from a 0.2 µm filtered solution of 20mM PB, 150mM NaCl, pH 7.4. Normally 5 % - 8 % trehalose, mannitol and 0.01% Tween80 are added as protectants before lyophilization. Please refer to the specific buffer information in the printed man
Reconstitution	Please refer to the printed manual for detailed information.

Data



> 90 % as determined by reducing SDS-PAGE.

Background

Pancreatic Lipase-Related Protein 1 (PNLIPRP1) belongs to the Lipase family within the AB hydrolase superfamily. PNLIPRP1 is a secreted protein and contains one PLAT domain. PNLIPRP1 is involved in lipid metabolic process, acting as a negative regulator of pancreatic lipase activity by competing with pancreatic lipase for colipase occupancy. PNLIPRP1 may play a role in inhibiting dietary triglyceride digestion, but it lacks detectable lipase activity towards triglycerides, diglycerides, phosphatidylcholine, galactolipids or cholesterol esters.

For Research Use Only

A Reliable Research Partner in Life Science and Medicine

Toll-free: 1-888-852-8623

Web: www.elabscience.com

Tel: 1-832-243-6086

Email: techsupport@elabscience.com

Fax: 1-832-243-6017