

# Recombinant Human Galactolipase/PLRP2 Protein (His Tag)



Catalog Number:PKSH032850

**Note:** Centrifuge before opening to ensure complete recovery of vial contents.

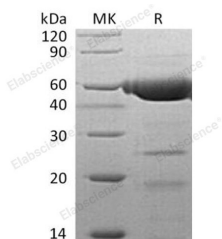
## Description

<b>Synonyms</b>	Pancreatic Lipase-Related Protein 2;PL-RP2;Galactolipase;PNLIPRP2;PLRP2
<b>Species</b>	Human
<b>Expression Host</b>	HEK293 Cells
<b>Sequence</b>	Lys18-Cys469
<b>Accession</b>	AAH05989.1
<b>Calculated Molecular Weight</b>	51.2 kDa
<b>Observed molecular weight</b>	62 kDa
<b>Tag</b>	C-His

## Properties

<b>Purity</b>	> 95 % as determined by reducing SDS-PAGE.
<b>Endotoxin</b>	< 1.0 EU per µg of the protein as determined by the LAL method.
<b>Storage</b>	Store at < -20°C, stable for 6 months. Please minimize freeze-thaw cycles.
<b>Shipping</b>	This product is provided as liquid. It is shipped at frozen temperature with blue ice/gel packs. Upon receipt, store it immediately at < - 20°C.
<b>Formulation</b>	Supplied as a 0.2 µm filtered solution of 20mM Tris-HCl, 150mM NaCl, 1mM CaCl <sub>2</sub> , 10% Glycerol, pH 7.5.
<b>Reconstitution</b>	Not Applicable

## Data



> 95 % as determined by reducing SDS-PAGE.

## Background

Pancreatic Lipase-Related Protein 2 (PNLIPRP2) is a secreted protein that belongs to the Lipase family of AB hydrolase superfamily. PNLIPRP2 is a lipase with broad substrate specificity that contains one PLAT domain. PNLIPRP2 is expressed mainly in pancreas. PNLIPRP2 can hydrolyze both phospholipids and galactolipids. PNLIPRP2 acts preferentially on monoglycerides; phospholipids and galactolipids. PNLIPRP2 also contributes to milk fat hydrolysis.

## For Research Use Only

A Reliable Research Partner in Life Science and Medicine

Toll-free: 1-888-852-8623

Web: [www.elabscience.com](http://www.elabscience.com)

Tel: 1-832-243-6086

Email: [techsupport@elabscience.com](mailto:techsupport@elabscience.com)

Fax: 1-832-243-6017