

# Recombinant Human PYM1/WIBG Protein (His Tag)

Catalog Number:PKSH032857



**Note:** Centrifuge before opening to ensure complete recovery of vial contents.

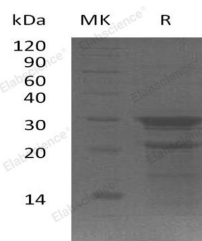
## Description

<b>Synonyms</b>	Partner of Y14 and Mago;Protein Wibg Homolog;WIBG;PYM
<b>Species</b>	Human
<b>Expression Host</b>	E.coli
<b>Sequence</b>	Met 1-Leu204
<b>Accession</b>	Q9BRP8
<b>Calculated Molecular Weight</b>	23.7 kDa
<b>Observed molecular weight</b>	30 kDa
<b>Tag</b>	C-His

## Properties

<b>Purity</b>	> 80 % as determined by reducing SDS-PAGE.
<b>Endotoxin</b>	< 1.0 EU per µg of the protein as determined by the LAL method.
<b>Storage</b>	Store at < -20°C, stable for 6 months. Please minimize freeze-thaw cycles.
<b>Shipping</b>	This product is provided as liquid. It is shipped at frozen temperature with blue ice/gel packs. Upon receipt, store it immediately at < - 20°C.
<b>Formulation</b>	Supplied as a 0.2 µm filtered solution of 20mM Tris-HCl, 100mM NaCl, 10% Glycerol, pH 8.0.
<b>Reconstitution</b>	Not Applicable

## Data



> 80 % as determined by reducing SDS-PAGE.

## Background

Partner of Y14 and Mago (WIBG) is a key regulator of the Exon Junction Complex (EJC). EJC is a multiprotein complex that associates immediately upstream of the exon-exon junction on mRNAs, is a positional landmark for the intron exon structure of genes, and directs post-transcriptional processes in the cytoplasm, for instance mRNA export, nonsense-mediated mRNA decay or translation. WIBG is a cytoplasmic RNA-binding protein, it can be excluded from nucleus by Crm1. WIBG as a cooperating partner of Mago-14, relates with Mago-14 by its N-terminal domain.

## For Research Use Only

A Reliable Research Partner in Life Science and Medicine

Toll-free: 1-888-852-8623

Web: [www.elabscience.com](http://www.elabscience.com)

Tel: 1-832-243-6086

Email: [techsupport@elabscience.com](mailto:techsupport@elabscience.com)

Fax: 1-832-243-6017