

Recombinant Human PDAP1/PAP Protein (His Tag)

Catalog Number:PKSH032868



Note: Centrifuge before opening to ensure complete recovery of vial contents.

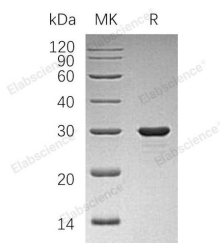
Description

Synonyms	28 kDa Heat- and Acid-Stable Phosphoprotein;PDGF-Associated Protein;PAP;PDGFA-Associated Protein 1;PAP1;PDAP1;HASPP28
Species	Human
Expression Host	E.coli
Sequence	Met 1-Lys181
Accession	Q13442
Calculated Molecular Weight	22.8 kDa
Observed molecular weight	30 kDa
Tag	N-His

Properties

Purity	> 95 % as determined by reducing SDS-PAGE.
Endotoxin	< 1.0 EU per µg of the protein as determined by the LAL method.
Storage	Store at < -20°C, stable for 6 months. Please minimize freeze-thaw cycles.
Shipping	This product is provided as liquid. It is shipped at frozen temperature with blue ice/gel packs. Upon receipt, store it immediately at < - 20°C.
Formulation	Supplied as a 0.2 µm filtered solution of 20mM Tris-HCl, 100mM NaCl, 0.1mM PMSF, 2mM DTT, pH 8.0.
Reconstitution	Not Applicable

Data



> 95 % as determined by reducing SDS-PAGE.

Background

Human PAP, also known as 28 kDa heat- and acid-stable phosphoprotein, PDGF-associated protein, PDGFA-associated protein 1, PDAP1, HASPP28, is a protein which belongs to the PDAP1 family. The encoded protein in rodents has been shown to bind PDGFA with a low affinity. PDGF-Associated Protein (PAP) is a phosphoprotein that may enhance PDGFA-stimulated cell growth in fibroblasts, but inhibits the mitogenic effect of PDGFB. PDAP1 expression is induced by TNF-alpha, and cells overexpressing PDAP1 show significantly less apoptosis on exposure to TNF-alpha.

For Research Use Only

A Reliable Research Partner in Life Science and Medicine

Toll-free: 1-888-852-8623

Web: www.elabscience.com

Tel: 1-832-243-6086

Email: techsupport@elabscience.com

Fax: 1-832-243-6017