

Recombinant Human Peptidase D/PEPD Protein

Catalog Number:PKSH032873



Note: Centrifuge before opening to ensure complete recovery of vial contents.

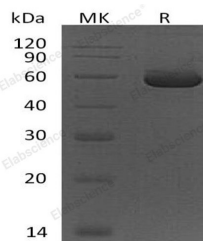
Description

Synonyms	Xaa-Pro dipeptidase;Imidodipeptidase;PeptidaseD;Prolinedipeptidase;PRD;PEPD.
Species	Human
Expression Host	E.coli
Sequence	Ala2-Lys493
Accession	AAH28295.1
Calculated Molecular Weight	54.5 kDa
Observed molecular weight	60 kDa
Tag	None

Properties

Purity	> 90 % as determined by reducing SDS-PAGE.
Endotoxin	< 1.0 EU per µg of the protein as determined by the LAL method.
Storage	Store at < -20°C, stable for 6 months. Please minimize freeze-thaw cycles.
Shipping	This product is provided as liquid. It is shipped at frozen temperature with blue ice/gel packs. Upon receipt, store it immediately at < - 20°C.
Formulation	Supplied as a 0.2 µm filtered solution of 25 mM Tris-HCl, 100 mM Glycine, 10% Glycerol pH 8.5.
Reconstitution	Not Applicable

Data



> 90 % as determined by reducing SDS-PAGE.

Background

PEPD belongs to the peptidase M24B family of Eukaryotic-type prolidase subfamily. PEPD is a cytosolic dipeptidase that hydrolyzes dipeptides with proline or hydroxyproline at the carboxy terminus. It is important in collagen metabolism because of the high levels of imino acids. Defects in PEPD are a cause of prolidase deficiency which is an autosomal recessive disorder associated with iminodipeptiduria.

For Research Use Only

A Reliable Research Partner in Life Science and Medicine

Toll-free: 1-888-852-8623

Web: www.elabscience.com

Tel: 1-832-243-6086

Email: techsupport@elabscience.com

Fax: 1-832-243-6017