

Recombinant Human Cyclophilin D/PPID Protein (His Tag)

Catalog Number:PKSH032874



Note: Centrifuge before opening to ensure complete recovery of vial contents.

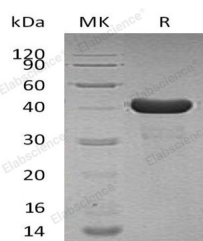
Description

Synonyms	Peptidyl-Prolyl Cis-Trans Isomerase D;PPIase D;40 kDa Peptidyl-Prolyl Cis-Trans Isomerase;Cyclophilin-40;CYP-40;Cyclophilin-Related Protein;Rotamase D;PPID;CYP40;CYPD
Species	Human
Expression Host	E.coli
Sequence	Met 1-Ala370
Accession	Q08752
Calculated Molecular Weight	43.9 kDa
Observed molecular weight	40 kDa
Tag	N-His & C-His

Properties

Purity	> 95 % as determined by reducing SDS-PAGE.
Endotoxin	< 1.0 EU per µg of the protein as determined by the LAL method.
Storage	Store at < -20°C, stable for 6 months. Please minimize freeze-thaw cycles.
Shipping	This product is provided as liquid. It is shipped at frozen temperature with blue ice/gel packs. Upon receipt, store it immediately at < - 20°C.
Formulation	Supplied as a 0.2 µm filtered solution of PBS, 10% Glycerol, pH 7.4.
Reconstitution	Not Applicable

Data



> 95 % as determined by reducing SDS-PAGE.

Background

Peptidyl-Prolyl Cis-Trans Isomerase D (PPID) belongs to the cyclophilin-type PPIase family and PPIase D subfamily. PPID is widely expressed and it contains one PPIase cyclophilin-type domain and three TPR repeats. PPID catalyzes the cis-trans isomerization of proline imidic peptide bonds in oligopeptides and accelerates the folding of proteins. PPID can bind to the immunosuppressant cyclosporine A and is known that its overexpression suppresses the apoptosis in cancer cells.

For Research Use Only

A Reliable Research Partner in Life Science and Medicine

Toll-free: 1-888-852-8623

Web: www.elabscience.com

Tel: 1-832-243-6086

Email: techsupport@elabscience.com

Fax: 1-832-243-6017