

## Recombinant Human PPIH Protein (His Tag)

**Catalog No.** PKSH032879

**Note:** Centrifuge before opening to ensure complete recovery of vial contents.

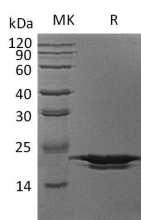
### Description

<b>Synonyms</b>	Peptidyl-Prolyl Cis-Trans Isomerase H;PPIase H;Rotamase H;Small Nuclear Ribonucleoprotein Particle-Specific Cyclophilin H;CypH;U-snRNP-Associated Cyclophilin SnuCyp-20;USA-CYP;PPIH;CYP20;CYPH
<b>Species</b>	Human
<b>Expression Host</b>	E.coli
<b>Sequence</b>	Met 1-Met 177
<b>Accession</b>	O43447
<b>Calculated Molecular Weight</b>	21.4 kDa
<b>Observed molecular weight</b>	24 kDa
<b>Tag</b>	N-His
<b>Bioactivity</b>	Not validated for activity

### Properties

<b>Purity</b>	> 95 % as determined by reducing SDS-PAGE.
<b>Endotoxin</b>	< 1.0 EU per µg of the protein as determined by the LAL method.
<b>Storage</b>	Store at < -20°C, stable for 6 months. Please minimize freeze-thaw cycles.
<b>Shipping</b>	This product is provided as liquid. It is shipped at frozen temperature with blue ice/gel packs. Upon receipt, store it immediately at < -20°C.
<b>Formulation</b>	Supplied as a 0.2 µm filtered solution of PBS, pH7.4.
<b>Reconstitution</b>	Not Applicable

### Data



> 95 % as determined by reducing SDS-PAGE.

### Background

Peptidyl-Prolyl Cis-Trans Isomerase H (PPIH) belongs to the Cyclophilin-type PPIase family that accelerate the folding of proteins. PPIases can catalyze the cis-trans isomerization of Proline Imidic peptide bonds in oligopeptides. PPIH participates in pre-mRNA splicing. It is a specific component of the complex that includes pre-mRNA processing factors PRPF3, PRPF4, and PRPF18, as well as U4/U5/U6 tri-snRNP. In addition, PPIH has PPIase activity and may play a role

### For Research Use Only

as a chaperone mediating the interactions between different proteins inside the spliceosome.