

Recombinant Human PPIH Protein (His Tag)

Catalog Number:PKSH032879



Note: Centrifuge before opening to ensure complete recovery of vial contents.

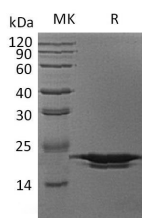
Description

Synonyms	Peptidyl-Prolyl Cis-Trans Isomerase H;PPIase H;Rotamase H;Small Nuclear Ribonucleoprotein Particle-Specific Cyclophilin H;CypH;U-snRNP-Associated Cyclophilin SnuCyp-20;USA-CYP;PPIH;CYP20;CYPH
Species	Human
Expression Host	E.coli
Sequence	Met 1-Met 177
Accession	O43447
Calculated Molecular Weight	21.4 kDa
Observed molecular weight	24 kDa
Tag	N-His

Properties

Purity	> 95 % as determined by reducing SDS-PAGE.
Endotoxin	< 1.0 EU per µg of the protein as determined by the LAL method.
Storage	Store at < -20°C, stable for 6 months. Please minimize freeze-thaw cycles.
Shipping	This product is provided as liquid. It is shipped at frozen temperature with blue ice/gel packs. Upon receipt, store it immediately at < - 20°C.
Formulation	Supplied as a 0.2 µm filtered solution of PBS, pH7.4.
Reconstitution	Not Applicable

Data



> 95 % as determined by reducing SDS-PAGE.

Background

Peptidyl-Prolyl Cis-Trans Isomerase H (PPIH) belongs to the Cyclophilin-type PPIase family that accelerate the folding of proteins. PPIases can catalyze the cis-trans isomerization of Proline Imidic peptide bonds in oligopeptides. PPIH participates in pre-mRNA splicing. It is a specific component of the complex that includes pre-mRNA processing factors PRPF3, PRPF4, and PRPF18, as well as U4/U5/U6 tri-snRNP. In addition, PPIH has PPIase activity and may play a role as a chaperone mediating the interactions between different proteins inside the spliceosome.

For Research Use Only

A Reliable Research Partner in Life Science and Medicine

Toll-free: 1-888-852-8623

Web: www.elabscience.com

Tel: 1-832-243-6086

Email: techsupport@elabscience.com

Fax: 1-832-243-6017