

Recombinant Human Peroxiredoxin-6/PRDX6 Protein(N-6His)

Catalog Number:PKSH032886

Note: Centrifuge before opening to ensure complete recovery of vial contents.

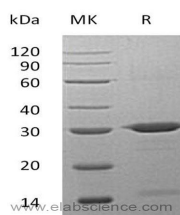
Description

Synonyms	Peroxiredoxin-6; 1-Cys Peroxiredoxin; 1-Cys PRX; 24 kDa Protein; Acidic Calcium-Independent Phospholipase A2; aiPLA2; Antioxidant Protein 2; Liver 2D PAGE Spot 40; Non-Selenium Glutathione Peroxidase; NSGPx; Red Blood Cells Page Spot 12; PRDX6; AOP2; KIAA0106
Species	Human
Expression Host	E.coli
Sequence	Met 1-Pro224
Accession	P30041
Calculated Molecular Weight	27.2 kDa
Observed molecular weight	30 kDa
Tag	N-6His

Properties

Purity	> 95 % as determined by reducing SDS-PAGE.
Endotoxin	< 1.0 EU per µg as determined by the LAL method.
Storage	Lyophilized proteins are stable for up to 12 months when stored at -20 to -80°C. Reconstituted protein solution can be stored at 4-8°C for 2-7 days. Aliquots of reconstituted samples are stable at < -20°C for 3 months.
Shipping	This product is provided as liquid. It is shipped at frozen temperature with blue ice/gel packs.Upon receipt; store it immediately at< -20°C.
Formulation	Supplied as a 0.2 µm filtered solution of 20mM PB, 150mM NaCl, pH 7.2.
Reconstitution	Please refer to the printed manual for detailed information.

Data



Recombinant Human Peroxiredoxin-6/PRDX6 Protein(N-6His)

Background

Peroxiredoxin 6 belongs to the thiol-specific antioxidant protein family, which is a bifunctional enzyme with two distinct active sites. Peroxiredoxin 6 is involved in redox regulation of the cell and can reduce Hydrogen peroxide and short chain organic, fatty acid, and phospholipid hydroperoxides. Peroxiredoxin 6 may regulates phospholipid turnover and protects against oxidative injury. Peroxiredoxin 6 eases the oxidative stress and TGF-beta-induced abnormalities of human trabecular meshwork cells, it is necessary for blood vessel integrity in injured skin.

For Research Use Only

A Reliable Research Partner in Life Science and Medicine

Toll-free: 1-888-852-8623

Web: www.elabscience.com

Tel: 1-832-243-6086

Email: techsupport@elabscience.com

Fax: 1-832-243-6017