

# Recombinant Human PHLDA2/BWR1C Protein (His Tag)



Catalog Number:PKSH032887

**Note:** Centrifuge before opening to ensure complete recovery of vial contents.

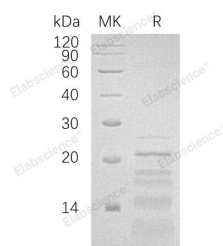
## Description

<b>Synonyms</b>	Pleckstrin Homology-Like Domain Family A Member 2;Beckwith-Wiedemann Syndrome Chromosomal Region 1 Candidate Gene C Protein;Imprinted in Placenta and Liver Protein;Tumor-Suppressing STF cDNA 3 Protein;Tumor-Suppressing Subchromosomal Transferable Fragment Candidate Gene 3 Protein;p17-Beckwith-Wiedemann Region 1 C;p17-BWR1C;PHLDA2;BWR1C;HLDA2;IPL;TSSC3
<b>Species</b>	Human
<b>Expression Host</b>	E.coli
<b>Sequence</b>	Met 1-Pro152
<b>Accession</b>	Q53GA4
<b>Calculated Molecular Weight</b>	18.1 kDa
<b>Observed molecular weight</b>	14-25 kDa
<b>Tag</b>	C-His

## Properties

<b>Purity</b>	> 90 % as determined by reducing SDS-PAGE.
<b>Endotoxin</b>	< 1.0 EU per µg of the protein as determined by the LAL method.
<b>Storage</b>	Generally, lyophilized proteins are stable for up to 12 months when stored at -20 to -80°C. Reconstituted protein solution can be stored at 4-8°C for 2-7 days. Aliquots of reconstituted samples are stable at < -20°C for 3 months.
<b>Shipping</b>	This product is provided as lyophilized powder which is shipped with ice packs.
<b>Formulation</b>	Lyophilized from a 0.2 µm filtered solution of 20mM Tris-HCl, 100mM NaCl, 1mM DTT, pH 8.0. Normally 5 % - 8 % trehalose, mannitol and 0.01% Tween80 are added as protectants before lyophilization. Please refer to the specific buffer information in
<b>Reconstitution</b>	Please refer to the printed manual for detailed information.

## Data



> 90 % as determined by reducing SDS-PAGE.

## Background

Pleckstrin Homology-Like Domain Family A Member 2 (PHLDA2) is a peripheral membrane protein that belongs to the PHLDA2 family. PHLDA2 is expressed in the placenta and adult prostate gland. In the placenta, it is present in all cells of the villous cytotrophoblast. PHLDA2 plays a role in regulating placenta growth. PHLDA2 may act via its PH domain that

## For Research Use Only

A Reliable Research Partner in Life Science and Medicine

Toll-free: 1-888-852-8623

Web: [www.elabscience.com](http://www.elabscience.com)

Tel: 1-832-243-6086

Email: [techsupport@elabscience.com](mailto:techsupport@elabscience.com)

Fax: 1-832-243-6017

# Recombinant Human PHLDA2/BWR1C Protein (His Tag)

Catalog Number:PKSH032887



competes with other PH domain-containing proteins, thereby preventing their binding to membrane lipids.

---

## For Research Use Only

A Reliable Research Partner in Life Science and Medicine

Toll-free: 1-888-852-8623

Tel: 1-832-243-6086

Fax: 1-832-243-6017

Web: [www.elabscience.com](http://www.elabscience.com)

Email: [techsupport@elabscience.com](mailto:techsupport@elabscience.com)