

# Recombinant Human PGK1/PGKA Protein (His Tag)

Catalog Number:PKSH032892



**Note:** Centrifuge before opening to ensure complete recovery of vial contents.

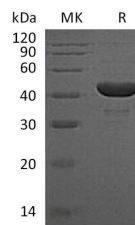
## Description

<b>Synonyms</b>	Phosphoglycerate kinase 1;Cell migration-inducing gene 10 protein;Primer recognition protein 2;PGK1;PGKA
<b>Species</b>	Human
<b>Expression Host</b>	HEK293 Cells
<b>Sequence</b>	Ser2-Ile417
<b>Accession</b>	P00558
<b>Calculated Molecular Weight</b>	45.5 kDa
<b>Observed molecular weight</b>	37-50 kDa
<b>Tag</b>	C-His

## Properties

<b>Purity</b>	> 95 % as determined by reducing SDS-PAGE.
<b>Endotoxin</b>	< 1.0 EU per µg of the protein as determined by the LAL method.
<b>Storage</b>	Store at < -20°C, stable for 6 months. Please minimize freeze-thaw cycles.
<b>Shipping</b>	This product is provided as liquid. It is shipped at frozen temperature with blue ice/gel packs. Upon receipt, store it immediately at < - 20°C.
<b>Formulation</b>	Supplied as a 0.2 µm filtered solution of 20mM Tris-HCl, 150mM NaCl, 20% Glycerol, pH 8.0.
<b>Reconstitution</b>	Not Applicable

## Data



> 95 % as determined by reducing SDS-PAGE.

## Background

Phosphoglycerate kinase 1 (PGK1) is an enzyme. It is mainly expressed in spermatogonia and localized on the principle piece in the sperm. Its expression significantly decreased in the testis of elderly men. PGK1 is involved in a critical energy-producing process known as glycolysis. It helps carry out a chemical reaction that converts a molecule called 1,3-diphosphoglycerate, which is produced during the breakdown of glucose, to another molecule called 3-phosphoglycerate during glycolysis. PGK1 may also act as a cofactor for polymerase alpha. The protein has been identified as a moonlighting protein based on its ability to perform mechanistically distinct functions.

## For Research Use Only

A Reliable Research Partner in Life Science and Medicine

Toll-free: 1-888-852-8623

Web: [www.elabscience.com](http://www.elabscience.com)

Tel: 1-832-243-6086

Email: [techsupport@elabscience.com](mailto:techsupport@elabscience.com)

Fax: 1-832-243-6017