

Recombinant Human Placental Lactogen/CSH1 Protein (His Tag)



Catalog Number:PKSH032900

Note: Centrifuge before opening to ensure complete recovery of vial contents.

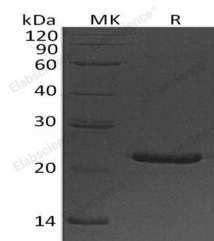
Description

Synonyms	Chorionic Somatomammotropin Hormone;Choriomammotropin;Lactogen;Placental Lactogen;PL;CSH1;CSH2;CS-1;CSA;CSMT;hCS-1;hCS-A
Species	Human
Expression Host	HEK293 Cells
Sequence	Val27-Phe217
Accession	PODML2
Calculated Molecular Weight	23.4 kDa
Observed molecular weight	24 kDa
Tag	C-His

Properties

Purity	> 95 % as determined by reducing SDS-PAGE.
Endotoxin	< 1.0 EU per µg of the protein as determined by the LAL method.
Storage	Generally, lyophilized proteins are stable for up to 12 months when stored at -20 to -80°C. Reconstituted protein solution can be stored at 4-8°C for 2-7 days. Aliquots of reconstituted samples are stable at < -20°C for 3 months.
Shipping	This product is provided as lyophilized powder which is shipped with ice packs.
Formulation	Lyophilized from a 0.2 µm filtered solution of 20mM Tris-HCl, 150mM NaCl, pH 8.0. Normally 5 % - 8 % trehalose, mannitol and 0.01% Tween80 are added as protectants before lyophilization. Please refer to the specific buffer information in the print
Reconstitution	Please refer to the printed manual for detailed information.

Data



> 95 % as determined by reducing SDS-PAGE.

Background

Chorionic Somatomammotropin Hormone (CSH1) belongs to the Somatotropin/Prolactin family. It is located at the growth hormone locus on chromosome 17. It is produced by cells in the syncytiotrophoblast layer of the placenta only during pregnancy. Although CSH1 does not interact with GHR but only activates PRLR through zinc-induced dimerization. It is expressed mainly in the placenta and utilizes multiple transcription initiation sites. CSH1 plays an important role in stimulating lactation, growth control and metabolism.

For Research Use Only

A Reliable Research Partner in Life Science and Medicine

Toll-free: 1-888-852-8623

Web: www.elabscience.com

Tel: 1-832-243-6086

Email: techsupport@elabscience.com

Fax: 1-832-243-6017