

# Recombinant Human PRADC1/PAP21 Protein (His Tag)

Catalog Number:PKSH032919



**Note:** Centrifuge before opening to ensure complete recovery of vial contents.

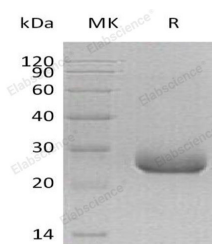
## Description

<b>Synonyms</b>	Protease-associated domain-containing protein 1;Protease-associated domain-containing protein of 21 kDa;Hpap21;C2orf7;PAP21;UNQ833/PRO1760
<b>Species</b>	Human
<b>Expression Host</b>	HEK293 Cells
<b>Sequence</b>	His22-Trp188
<b>Accession</b>	Q9BSG0
<b>Calculated Molecular Weight</b>	20.0 kDa
<b>Observed molecular weight</b>	28 kDa
<b>Tag</b>	C-His

## Properties

<b>Purity</b>	> 95 % as determined by reducing SDS-PAGE.
<b>Endotoxin</b>	< 1.0 EU per µg of the protein as determined by the LAL method.
<b>Storage</b>	Generally, lyophilized proteins are stable for up to 12 months when stored at -20 to -80°C. Reconstituted protein solution can be stored at 4-8°C for 2-7 days. Aliquots of reconstituted samples are stable at < -20°C for 3 months.
<b>Shipping</b>	This product is provided as lyophilized powder which is shipped with ice packs.
<b>Formulation</b>	Lyophilized from a 0.2 µm filtered solution of 20mM PB,150mM NaCl, pH7.4. Normally 5 % - 8 % trehalose, mannitol and 0.01% Tween80 are added as protectants before lyophilization. Please refer to the specific buffer information in the printed manual
<b>Reconstitution</b>	Please refer to the printed manual for detailed information.

## Data



> 95 % as determined by reducing SDS-PAGE.

## Background

PRADC1, also known as C2orf7 or PAP21, is short for Protease-associated domain-containing protein 1. It is a 188 aa. with a 21 aa. signal, and the 171 located Asn can be glycosylated. PRADC1 has two mutagenesis which are N121Q and N171Q. This protein is secreted and highly expressed in skeletal muscle, heart and liver. It is expressed at intermediate level in kidney.

## For Research Use Only

A Reliable Research Partner in Life Science and Medicine

Toll-free: 1-888-852-8623

Web: [www.elabscience.com](http://www.elabscience.com)

Tel: 1-832-243-6086

Email: [techsupport@elabscience.com](mailto:techsupport@elabscience.com)

Fax: 1-832-243-6017