

Recombinant Human PSG1 Protein (His Tag)

Catalog Number:PKSH032923



Note: Centrifuge before opening to ensure complete recovery of vial contents.

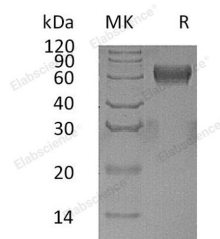
Description

Synonyms	Pregnancy-specific beta-1-glycoprotein 1;PSBG-1;CD66 antigen-like family member F;Fetal liver non-specific cross-reactive antigen 1/2;PSG95;Pregnancy-specific beta-1 glycoprotein C/D
Species	Human
Expression Host	HEK293 Cells
Sequence	Gln35-Pro419
Accession	P11464
Calculated Molecular Weight	44.5 kDa
Observed molecular weight	68 kDa
Tag	C-His

Properties

Purity	> 95 % as determined by reducing SDS-PAGE.
Endotoxin	< 1.0 EU per µg of the protein as determined by the LAL method.
Storage	Generally, lyophilized proteins are stable for up to 12 months when stored at -20 to -80°C. Reconstituted protein solution can be stored at 4-8°C for 2-7 days. Aliquots of reconstituted samples are stable at < -20°C for 3 months.
Shipping	This product is provided as lyophilized powder which is shipped with ice packs.
Formulation	Lyophilized from a 0.2 µm filtered solution of 20mM PB,150mM NaCl,pH7.4. Normally 5 % - 8 % trehalose, mannitol and 0.01% Tween80 are added as protectants before lyophilization. Please refer to the specific buffer information in the printed manual
Reconstitution	Please refer to the printed manual for detailed information.

Data



> 95 % as determined by reducing SDS-PAGE.

Background

Pregnancy-specific beta-1-glycoprotein 1 (PSBG-1 for short), also named CD66 antigen-like family member F, Fetal liver non-specific cross-reactive antigen 1/2, PSG95, Pregnancy-specific beta-1 glycoprotein C/D, is a secreted protein which belongs to the immunoglobulin superfamily, CEA family. It contains 3 Ig-like C2-type (immunoglobulin-like) domains and 1 Ig-like V-type (immunoglobulin-like) domain. The human placenta is a multihormonal endocrine organ that produces hormones, enzymes, and other molecules that support fetal survival and development.

For Research Use Only

A Reliable Research Partner in Life Science and Medicine

Toll-free: 1-888-852-8623

Web: www.elabscience.com

Tel: 1-832-243-6086

Email: techsupport@elabscience.com

Fax: 1-832-243-6017