

Recombinant Human PSG2 Protein (His Tag)

Catalog Number:PKSH032924



Note: Centrifuge before opening to ensure complete recovery of vial contents.

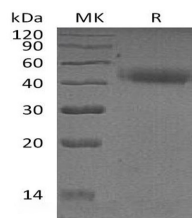
Description

Synonyms	Pregnancy specific beta-1-glycoprotein 2;PSBG2;Pregnancy-specific beta-1 glycoprotein E;pregnancy-specific beta-1-glycoprotein 2;pregnancy-specific beta-1-glycoprotein 7;PSG2
Species	Human
Expression Host	HEK293 Cells
Sequence	Gln35-Thr335
Accession	P11465
Calculated Molecular Weight	34.5 kDa
Observed molecular weight	43 kDa
Tag	C-His

Properties

Purity	> 95 % as determined by reducing SDS-PAGE.
Endotoxin	< 1.0 EU per µg of the protein as determined by the LAL method.
Storage	Store at < -20°C, stable for 6 months. Please minimize freeze-thaw cycles.
Shipping	This product is provided as liquid. It is shipped at frozen temperature with blue ice/gel packs. Upon receipt, store it immediately at < - 20°C.
Formulation	Supplied as a 0.2 µm filtered solution of 20mM PB, 150mM NaCl, pH 7.4.
Reconstitution	Not Applicable

Data



> 95 % as determined by reducing SDS-PAGE.

Background

PSG2 is a secreted protein that in humans is encoded by the PSG2 gene. It is a member of the human pregnancy-specific glycoproteins (PSGs) family. These proteins are synthesized in large amounts by placental trophoblasts and released into the maternal circulation during pregnancy. PSG2 consist of a single N domain, with structural similarity to the immunoglobulin variable domains, followed by a variable number of immunoglobulin constant-like A and/or B domains. It has an arg-gly-asp (RGD) motif, which has been shown to function as an adhesion recognition signal for several integrins, in the N-terminal domain.

For Research Use Only

A Reliable Research Partner in Life Science and Medicine

Toll-free: 1-888-852-8623

Web: www.elabscience.com

Tel: 1-832-243-6086

Email: techsupport@elabscience.com

Fax: 1-832-243-6017