

Recombinant Human PSG9/PSBG9 Protein (His Tag)

Catalog Number:PKSH032927



Note: Centrifuge before opening to ensure complete recovery of vial contents.

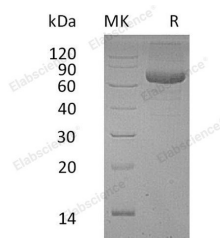
Description

Synonyms	Pregnancy-specific beta-1-glycoprotein 9;PS-beta-G-9;PSBG-9;Pregnancy-specific glycoprotein 9;PS34;Pregnancy-specific beta-1 glycoprotein B;PS-beta-B;Pregnancy-specific beta-1-glycoprotein 11;PS-beta-G-11;PSBG-11;Pregnancy-specific glycoprotein 11;Pregnancy-specific glycoprotein 7;PSG7;PSG11
Species	Human
Expression Host	HEK293 Cells
Sequence	Glu35-Ser426
Accession	AAH20759.1
Calculated Molecular Weight	45.6 kDa
Observed molecular weight	65 kDa
Tag	C-His

Properties

Purity	> 95 % as determined by reducing SDS-PAGE.
Endotoxin	< 1.0 EU per µg of the protein as determined by the LAL method.
Storage	Store at < -20°C, stable for 6 months. Please minimize freeze-thaw cycles.
Shipping	This product is provided as liquid. It is shipped at frozen temperature with blue ice/gel packs. Upon receipt, store it immediately at < -20°C.
Formulation	Supplied as a 0.2 µm filtered solution of 20mM PB, 150mM NaCl, pH 7.2.
Reconstitution	Not Applicable

Data



> 95 % as determined by reducing SDS-PAGE.

Background

Pregnancy-specific beta-1-glycoprotein 9 (PSG9) is a secreted protein and contains 3 Ig-like C2-type (immunoglobulin-like) domains, 1 Ig-like V-type (immunoglobulin-like) domain. It is a member of the PSG family, a group of closely related secreted glycoproteins that are highly expressed in fetal placental syncytiotrophoblast cells. The members of the PSG protein family all have a characteristic N-terminal domain that is homologous to the immunoglobulin variable region. PSGs become detectable in serum during the first two to three weeks of pregnancy and increase as the pregnancy progresses, eventually representing the most abundant fetal protein in the maternal blood at term. PSGs function to stimulate secretion of TH2-type cytokines from monocytes, and they may also modulate the maternal immune system during pregnancy, thereby protecting the semi-alloypic fetus from rejection. PSGs are commonly expressed in trophoblast tumors. Eleven human PSG proteins (PSG1-PSG11) have been described.

For Research Use Only

A Reliable Research Partner in Life Science and Medicine

Toll-free: 1-888-852-8623

Web: www.elabscience.com

Tel: 1-832-243-6086

Email: techsupport@elabscience.com

Fax: 1-832-243-6017