

Recombinant Human CPVL/VCP-Like Protein (His Tag)

Catalog Number:PKSH032931



Note: Centrifuge before opening to ensure complete recovery of vial contents.

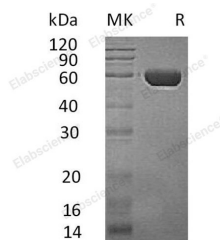
Description

Synonyms	Probable serine carboxypeptidase CPVL;Carboxypeptidase vitellogenic-like;Vitellogenic carboxypeptidase-like protein;VCP-like protein;CPVL
Species	Human
Expression Host	HEK293 Cells
Sequence	Leu23-Gly476
Accession	AAH16838.1
Calculated Molecular Weight	52.9 kDa
Observed molecular weight	54-65 kDa
Tag	C-His

Properties

Purity	> 95 % as determined by reducing SDS-PAGE.
Endotoxin	< 1.0 EU per µg of the protein as determined by the LAL method.
Storage	Store at < -20°C, stable for 6 months. Please minimize freeze-thaw cycles.
Shipping	This product is provided as liquid. It is shipped at frozen temperature with blue ice/gel packs. Upon receipt, store it immediately at < - 20°C.
Formulation	Supplied as a 0.2 µm filtered solution of 20mM Tris-HCl, 150mM NaCl, 10% Glycerol, pH 7.5.
Reconstitution	Not Applicable

Data



> 95 % as determined by reducing SDS-PAGE.

Background

Probable serine carboxypeptidase CPVL, also known as Carboxypeptidase, vitellogenic-like, Vitellogenic carboxypeptidase-like protein, is a member of the peptidase S10 family. It is expressed in macrophages but not in other leukocytes. And specifically, it is abundantly expressed in heart and kidney, also expressed in spleen, leukocytes, and placenta. This enzyme may be involved in the digestion of phagocytosed particles in the lysosome, and also participation in an inflammatory protease cascade, and trimming of peptides for antigen presentation.

For Research Use Only

A Reliable Research Partner in Life Science and Medicine

Toll-free: 1-888-852-8623

Web: www.elabscience.com

Tel: 1-832-243-6086

Email: techsupport@elabscience.com

Fax: 1-832-243-6017