

# Recombinant Human Progonadoliberin-2/GNRH2 Protein (His Tag)



Catalog Number:PKSH032936

**Note:** Centrifuge before opening to ensure complete recovery of vial contents.

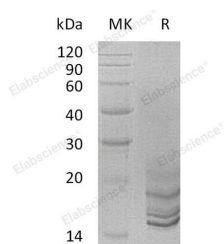
## Description

<b>Synonyms</b>	Progonadoliberin-2;Progonadoliberin II;Gonadoliberin-2;Gonadoliberin II;Gonadotropin-Releasing Hormone II;GnRH II;Luliberin II;Luteinizing Hormone-Releasing Hormone II;LH-RH II;GnRH-Associated Peptide 2;GnRH-Associated Peptide II;GNRH2
<b>Species</b>	Human
<b>Expression Host</b>	HEK293 Cells
<b>Sequence</b>	Gln24-Val120
<b>Accession</b>	O43555
<b>Calculated Molecular Weight</b>	11.6 kDa
<b>Observed molecular weight</b>	14-25 kDa
<b>Tag</b>	C-His

## Properties

<b>Purity</b>	> 95 % as determined by reducing SDS-PAGE.
<b>Endotoxin</b>	< 1.0 EU per µg of the protein as determined by the LAL method.
<b>Storage</b>	Generally, lyophilized proteins are stable for up to 12 months when stored at -20 to -80°C. Reconstituted protein solution can be stored at 4-8°C for 2-7 days. Aliquots of reconstituted samples are stable at < -20°C for 3 months.
<b>Shipping</b>	This product is provided as lyophilized powder which is shipped with ice packs.
<b>Formulation</b>	Lyophilized from a 0.2 µm filtered solution of PBS, pH 7.4. Normally 5 % - 8 % trehalose, mannitol and 0.01% Tween80 are added as protectants before lyophilization. Please refer to the specific buffer information in the printed manual.
<b>Reconstitution</b>	Please refer to the printed manual for detailed information.

## Data



> 95 % as determined by reducing SDS-PAGE.

## Background

Progonadoliberin-2, also known as Progonadoliberin II and GNRH2, belongs to the gonadotropin-releasing hormone family. GNRH2 is specially expressed in midbrain, at significantly higher levels outside the brain (up to 30-fold). GNRH2 can be cleaved into two chains, gonadoliberin-2 and GnRH-associated peptide 2. gonadoliberin-2 regulates reproduction in females by stimulating the secretion of both luteinizing- and follicle-stimulating hormones. The proproteins produce three transcript variants, but produce the same peptide hormone.

## For Research Use Only

A Reliable Research Partner in Life Science and Medicine

Toll-free: 1-888-852-8623

Web: [www.elabscience.com](http://www.elabscience.com)

Tel: 1-832-243-6086

Email: [techsupport@elabscience.com](mailto:techsupport@elabscience.com)

Fax: 1-832-243-6017