

Recombinant Human PSA/KLK3 Protein (aa 25-261, His Tag)



Catalog Number:PKSH032949

Note: Centrifuge before opening to ensure complete recovery of vial contents.

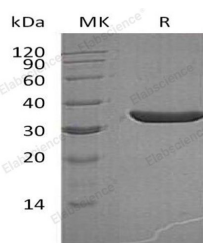
Description

| | |
|------------------------------------|--|
| Synonyms | APS;Hk3;KLK2A1;PSA;Prostate-Specific Antigen;PSA;Gamma-Seminoprotein;Seminin;Kallikrein-3;P-30 Antigen;Semenogelase; |
| Species | Human |
| Expression Host | HEK293 Cells |
| Sequence | Ile25-Pro261 |
| Accession | P07288 |
| Calculated Molecular Weight | 27.1 kDa |
| Observed molecular weight | 35 kDa |
| Tag | C-His |

Properties

| | |
|-----------------------|--|
| Purity | > 95 % as determined by reducing SDS-PAGE. |
| Endotoxin | < 1.0 EU per µg of the protein as determined by the LAL method. |
| Storage | Store at < -20°C, stable for 6 months. Please minimize freeze-thaw cycles. |
| Shipping | This product is provided as liquid. It is shipped at frozen temperature with blue ice/gel packs. Upon receipt, store it immediately at < - 20°C. |
| Formulation | Supplied as a 0.2 µm filtered solution of 50mM Tris-HCl, 10mM CaCl ₂ , 150mM NaCl, 0.05% Brij 35, pH 7.5. |
| Reconstitution | Not Applicable |

Data



> 95 % as determined by reducing SDS-PAGE.

Background

KLK3; also known as APS; is short for Prostate-specific antigen. It is a 261 aa. protein which belongs to the peptidase S1 family and Kallikrein subfamily. This protein has 5 isoforms produced by alternative splicing. It is a secreted protein and can form a heterodimer with SERPINA5 which can inhibit its activity. KLK3 is also strongly inhibited by Zn²⁺; 100 times more abundant in semen than in serum. This inhibition is relieved by exposure to semenogelins; which are avid zinc binders. KLK3 can hydrolyze semenogelin-1 thus leading to the liquefaction of the seminal coagulum.

For Research Use Only

A Reliable Research Partner in Life Science and Medicine

Toll-free: 1-888-852-8623

Web: www.elabscience.com

Tel: 1-832-243-6086

Email: techsupport@elabscience.com

Fax: 1-832-243-6017