

Recombinant Human Protamine-2/PRM2 Protein (His Tag)

DIA • AN[®]
by Elabscience

Catalog Number:PKSH032952

Note: Centrifuge before opening to ensure complete recovery of vial contents.

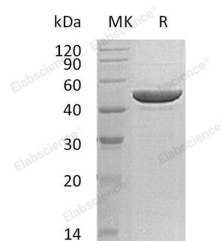
Description

Synonyms	Ribonucleoside-Diphosphate Reductase Subunit M2;Ribonucleotide Reductase Small Chain;Ribonucleotide Reductase Small Subunit;RRM2;RR2
Species	Human
Expression Host	HEK293 Cells
Sequence	Met 1-Phe389
Accession	P31350
Calculated Molecular Weight	45.9 kDa
Observed molecular weight	47 kDa
Tag	C-His

Properties

Purity	> 95 % as determined by reducing SDS-PAGE.
Endotoxin	< 1.0 EU per µg of the protein as determined by the LAL method.
Storage	Generally, lyophilized proteins are stable for up to 12 months when stored at -20 to -80°C. Reconstituted protein solution can be stored at 4-8°C for 2-7 days. Aliquots of reconstituted samples are stable at < -20°C for 3 months.
Shipping	This product is provided as lyophilized powder which is shipped with ice packs.
Formulation	Lyophilized from a 0.2 µm filtered solution of 20mM Tris-HCl, 150mM NaCl, 5% Trehalose, pH 8.0. Normally 5 % - 8 % trehalose, mannitol and 0.01% Tween80 are added as protectants before lyophilization. Please refer to the specific buffer informatio
Reconstitution	Please refer to the printed manual for detailed information.

Data



> 95 % as determined by reducing SDS-PAGE.

Background

Ribonucleoside-Diphosphate Reductase Subunit M2 (RRM2) belongs to the ribonucleoside diphosphate reductase small chain family. The reductase of RRM2 catalyzes the formation of deoxyribonucleotides from ribonucleotides. Synthesis of the encoded protein (M2) is regulated in a cell-cycle dependent fashion. RRM2 supplies the precursors essential for DNA synthesis. RRM2 catalyzes the biosynthesis of deoxyribonucleotides from the corresponding ribonucleotides. Phosphorylation on Ser-20 relieves the inhibitory effect on Wnt signaling.

For Research Use Only

A Reliable Research Partner in Life Science and Medicine

Toll-free: 1-888-852-8623

Web: www.elabscience.com

Tel: 1-832-243-6086

Email: techsupport@elabscience.com

Fax: 1-832-243-6017