

Recombinant Human PDIA6 Protein (His Tag)

Catalog No. PKSH032958

Note: Centrifuge before opening to ensure complete recovery of vial contents.

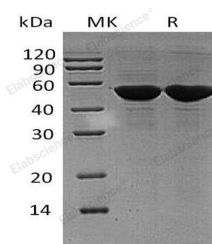
Description

Synonyms	Protein Disulfide-Isomerase A6;Endoplasmic Reticulum Protein 5;ER Protein 5;ERp5;Protein Disulfide Isomerase P5;Thioredoxin Domain-Containing Protein 7;PDIA6;ERP5;P5;TXNDC7
Species	Human
Expression Host	HEK293 Cells
Sequence	Leu20-Leu440
Accession	Q15084
Calculated Molecular Weight	47.2 kDa
Observed molecular weight	52 kDa
Tag	C-His
Bioactivity	Not validated for activity

Properties

Purity	> 95 % as determined by reducing SDS-PAGE.
Endotoxin	< 1.0 EU per µg of the protein as determined by the LAL method.
Storage	Store at < -20°C, stable for 6 months. Please minimize freeze-thaw cycles.
Shipping	This product is provided as liquid. It is shipped at frozen temperature with blue ice/gel packs. Upon receipt, store it immediately at < -20°C.
Formulation	Supplied as a 0.2 µm filtered solution of 20mM Tris-HCl, 150mM NaCl, 10% Glycerol, pH 8.0.
Reconstitution	Not Applicable

Data



> 95 % as determined by reducing SDS-PAGE.

Background

Protein Disulfide-Isomerase A6 (PDIA6) is a 48.5kDa protein that belongs to the protein disulfide isomerase family (PDI). PDIA6 is an enzyme in the endoplasmic reticulum in eukaryotes which catalyzes the formation and breakage of disulfide bonds between cysteine residues within proteins as they fold. The PDIA6 expressed in platelets, its functions as a

For Research Use Only

chaperone that inhibits aggregation of misfolded proteins. PDIA6 is part a large chaperone multiprotein complex comprising DNAJB11, HSP90B1, HSPA5, HYOU, PDIA2, PDIA4, PDIA6, PPIB, SDF2L1, UGT1A1. PDIA6 also plays a role in platelet aggregation and activation by agonists such as convulxin, collagen and thrombin.