

Recombinant Human FAM3C Protein (His Tag)

Catalog Number:PKSH032962



Note: Centrifuge before opening to ensure complete recovery of vial contents.

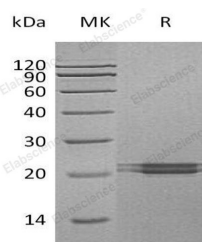
Description

Synonyms	Protein FAM3C;Interleukin-Like EMT Inducer;FAM3C;ILEI
Species	Human
Expression Host	HEK293 Cells
Sequence	Gln25-Asp227
Accession	Q92520
Calculated Molecular Weight	23.2 kDa
Observed molecular weight	20-25 kDa
Tag	C-His

Properties

Purity	> 95 % as determined by reducing SDS-PAGE.
Endotoxin	< 1.0 EU per µg of the protein as determined by the LAL method.
Storage	Generally, lyophilized proteins are stable for up to 12 months when stored at -20 to -80°C. Reconstituted protein solution can be stored at 4-8°C for 2-7 days. Aliquots of reconstituted samples are stable at < -20°C for 3 months.
Shipping	This product is provided as lyophilized powder which is shipped with ice packs.
Formulation	Lyophilized from a 0.2 µm filtered solution of 20mM PB, 150mM NaCl, pH 7.2. Normally 5 % - 8 % trehalose, mannitol and 0.01% Tween80 are added as protectants before lyophilization. Please refer to the specific buffer information in the printed man
Reconstitution	Please refer to the printed manual for detailed information.

Data



> 95 % as determined by reducing SDS-PAGE.

Background

FAM3C, also called interleukin-like EMT inducer, usually exist in most secretory epithelia. It belongs to the FAM3 family according to their sequence similarities. The up-regulation and/or mislocalization in breast cancer and liver carcinoma cells of FAM3C is strongly correlated with metastasis formation and survival. FAM3C can be involved in retinal lamina formation and promote epithelial to mesenchymal transition.

For Research Use Only

A Reliable Research Partner in Life Science and Medicine

Toll-free: 1-888-852-8623

Web: www.elabscience.com

Tel: 1-832-243-6086

Email: techsupport@elabscience.com

Fax: 1-832-243-6017